

The Camden (Haverstock Hill / Rosslyn Hill and Neighbouring Streets) Experimental Traffic Order 2020

Notice is hereby given that the Council of the London Borough of Camden made the above mentioned Experimental Traffic Order on 23 November 2020 under Section 9 of the Road Traffic Regulation Act 1984, as amended. The order will come into force on 3 December 2020. The general nature and effect of the order is as follows.

In order to facilitate the construction of cycle lanes on both sides of the carriageway in Haverstock Hill and Rosslyn Hill, between the junctions with Prince of Wales Road and Pond Street, parking places will be removed from these roads except for the provision of a number of loading bays. Parking provision will be re-allocated in side streets close to their junctions with the main road. Waiting and loading restrictions will apply at all times in Haverstock Hill and Rosslyn Hill, between the junctions mentioned, except where loading bays are designated. A summary of these changes is set out in the table below.

Additionally, the hours of control for the north-westbound bus lane will be extended so that it operates at all times.

Street Name	Change Proposed
Haverstock Hill (between Eton Road and Steele's Road)	5 residents' parking spaces removed 2 car club parking spaces removed and relocated to Parkhill Road 6 pay-by phone parking spaces removed Motorcycle parking bay removed loading bay designated on north-east side (Mon-Sat 10am - 12noon)
Eton Road	1 residents' parking space removed and replaced with disabled parking 6 residents' parking spaces removed and replaced with shared permit holder and pay-by-phone parking 2 residents' parking spaces removed and replaced with pay-by-phone parking
Steele's Road	Loading bay designated (Mon-Fri 9am -6.30pm, Sat 9.30am - 1.30pm) 2 residents' parking spaces removed and replaced with pay-by-phone parking
Haverstock Hill (between Steele's Road and England's Lane)	3 residents' parking spaces removed 4 shared residents' and pay-by-phone parking spaces removed 7 residents' parking spaces removed
Parkhill Road	2 residents' parking spaces removed and replaced with 2 car club bays
England's Lane	4 residents' parking spaces removed and replaced with shared use residents' and pay-by-phone parking
Haverstock Hill (between England's Lane and Antrim Grove)	14 residents' parking spaces removed
Antrim Grove	1 residents' parking space removed and replaced with car club bay 1 resident parking space installed outside No. 1 Antrim Grove
Upper Park Road	1 pay-by-phone parking space to be removed and replaced with single yellow line
Haverstock Hill (between Antrim Grove and Upper Park Road)	2 resident's parking spaces removed
Haverstock Hill (between Upper Park Road and Belsize Grove)	2 electric vehicle charging bays removed and relocated to Downside Crescent 3 residents' parking bays removed
Belsize Grove	2 residents' parking spaces removed and replaced with 2 disabled parking bays

Street Name	Change Proposed
	4 residents' parking spaces removed and replaced with shared residents and pay-by-phone parking 1 residents' and 1 disabled parking spaces removed and replaced with loading bay (Mon-Fri 9am - 6.30pm, Sat 9.30am - 1.30pm) 1 residents' parking space removed and replaced with a disabled parking bay
Haverstock Hill (between Belsize Grove and Howitt Road)	2 disabled parking spaces removed and relocated to Belsize Grove 8 pay-by-phone parking spaces removed Car club bay removed and relocated to side street
Downside Crescent	4 residents' parking spaces removed and replaced with 2 electric charging bay and 2 car club bay
Howitt Road	2 residents' parking spaces removed and replaced with shared residents' and pay-by-phone parking
Glenloch Road	2 car club bays removed and replaced with 1 disabled parking and double yellow line 1 residents' parking space removed and replaced with 1 disabled parking bay
Haverstock Hill (between Glenloch Road and Belsize Avenue)	2 pay-by-phone parking spaces removed and replaced with loading bay (Mon - Sat 10am - 12noon) loading bay removed 12 pay-by-phone parking spaces removed 3 disabled bays removed, 2 relocated to Glenloch Road and 1 relocated to outside No. 213 Haverstock Hill (old Town Hall building) 1 disabled bay and 1 loading bay (Mon - Sun, 24 hours) introduced outside No. 213 Haverstock Hill
Rossllyn Hill	10m coach bay removed and replaced with a loading bay (Mon - Sun, 24 hours)

The Council will be considering in due course whether the provisions of the experimental order should continue in force indefinitely. Within a period of six months beginning with the date on which this experimental order comes into force or, if the order is varied by other orders or modified pursuant to section 10 (2) of the Road Traffic Regulation Act 1984 beginning with the day on which the variation or modification or the latest variation or modification came into force, any person may object to the making of an order for the purpose of such indefinite continuation.

Any such objection must be made in writing, stating the grounds on which the objection is being made and sent to safetravel@camden.gov.uk or by post to FREEPOST LBC Transport Strategy. Copies of the orders and other documents related to these schemes may be inspected at camden.gov.uk/recently-advertised-proposals or by contacting traffic.orders@camden.gov.uk or at London Borough of Camden, 5 Pancras Square, N1C 4AG.

Notice is also given under s.23 of the Road Traffic Regulation Act 1984 of the council's intention to construct new pedestrian crossings at these locations in Haverstock Hill all of which are zebra crossings: a) approximately 10 metres north-west of the junction with Eton Road, b) approximately 10 metres north-west of the junction with Steele's Road, c) between the junctions with Antrim Grove and Upper Park Road.

Notice is further given under s.23 and s.90C of the Highways Act 1980 of the council's intention to construct a raised zebra crossing between the junctions with Rowland Hill Street and Belsize Lane. The crossing will have a flat-top profile and will be constructed to no more than 100mm height.

Comments in relation to these pedestrian crossings can be sent to the same addresses shown above.

Peter Mardell
Head of Parking Operations

26 November 2020

The Camden (Haverstock Hill / Rossllyn Hill and Neighbouring Streets) Experimental Traffic Order 2020

STATEMENT OF REASONS

The measures introduced by the experimental scheme are intended to improve safety for an anticipated, increased number of people cycling and walking as a result of the COVID-19 pandemic and are in alignment with Camden's Transport Strategy objectives.

The cycle lane proposals, and consequent changes to waiting and loading restrictions and the allocation of parking places in the area, form part of a wider network of strategic "pop-up" cycle lanes being developed in response to COVID-19. Haverstock Hill / Rossllyn Hill has been identified as a "top" priority location in TfL's strategic cycle network analysis based on both current and expected cycle flows. This network is being developed to enable more people to cycle safely as public transport capacity decreases due to social distancing and people choose alternative means of travel.

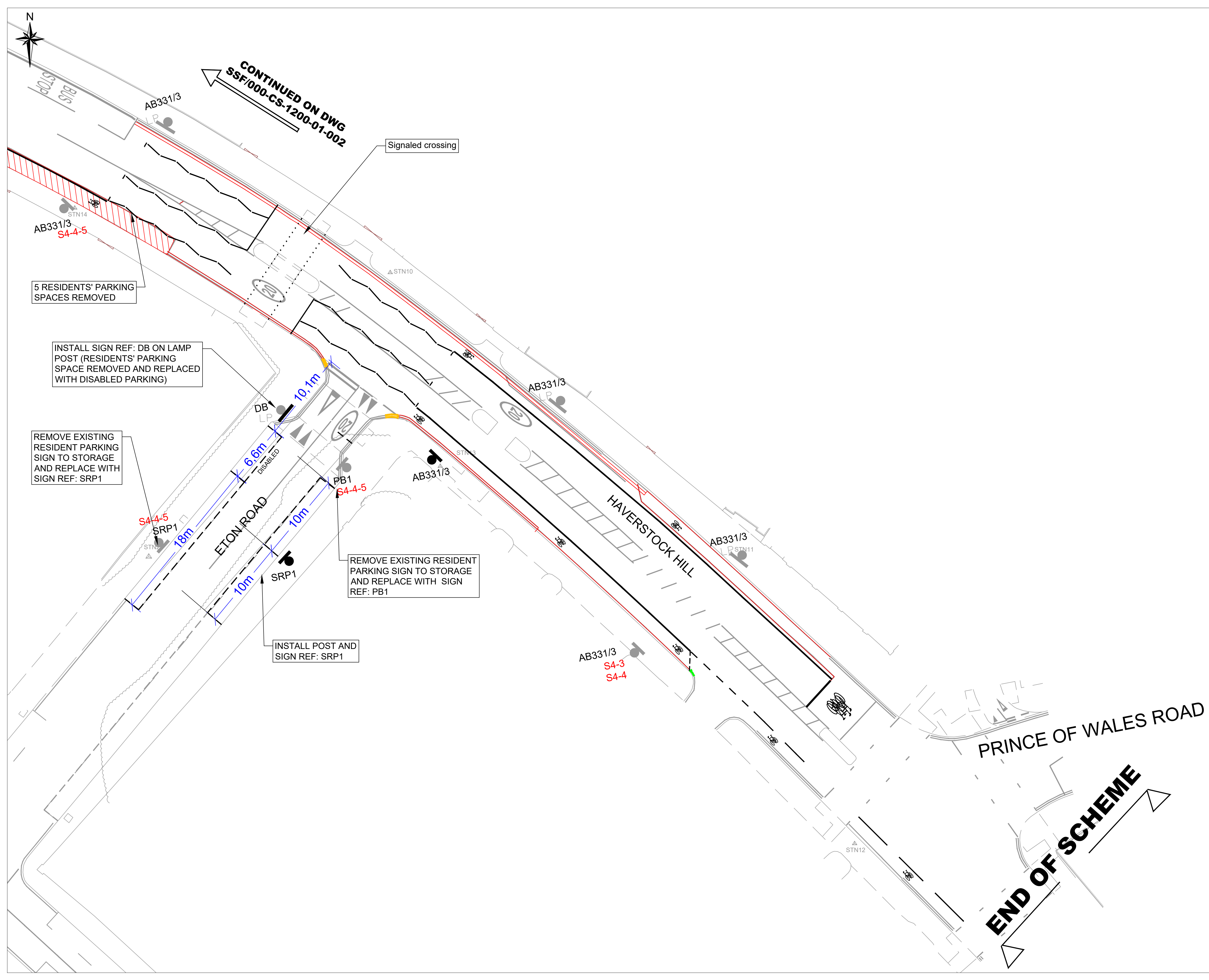
The measures additionally contribute to the delivery of the Council's agreed transport policies by facilitating sustainable transport modes enabling and encouraging people to walk and cycle safely.

The Camden (Haverstock Hill / Rosslyn Hill and Neighbouring Streets) Experimental Traffic Order 2020

REASONS FOR PROCEEDING BY WAY OF AN EXPERIMENT

At the present time, restrictions on people's movements as a result of the Covid-19 crisis may render normal modes of consultation ineffective. Additionally, the current state of traffic on the affected streets may not reflect the ordinary operation of the scheme which may prevent consultees from forming a reasoned opinion over their effect.

The experimental order will be in force for a maximum period of 18 months and the council will decide whether or not to retain the scheme indefinitely before the expiration of this period. It is anticipated that the scheme may have a longer-term utility and its operation will be evaluated whilst the experimental order remain in force. Council officers will carry out a full consultation on the scheme in approximately 12 months to elicit views from stakeholders and members of the public to inform its decision.



- KEY:**
- Install new post and sign (check signage reference)
 - Install new sign on existing post
 - Install new sign on existing lamp post
 - Remove post to tip and sign to storage
 - Remove sign form existing post to storage
 - Remove sign from existing lamp post to storage
 - New bay or refresh existing bay markings
 - New disabled bay markings
 - New loading bay markings
 - New electric vehicle charging bay markings
 - New car club bay markings
 - Bay markings to be removed
 - New double yellow line markings
 - New yellow line termination markings
 - New single yellow line markings
 - Waiting restriction markings to be removed

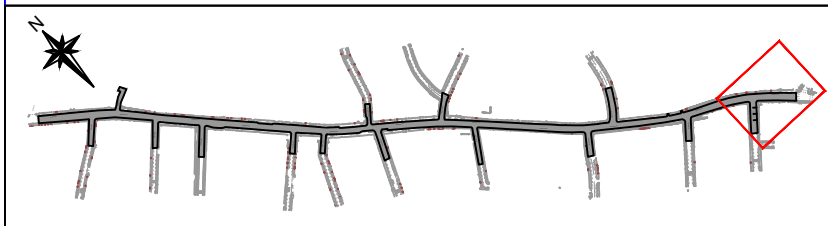
AB331/3

Code	Description
SRP1	Mon-Fri 9am-6.30pm, Sat 9.30am-1.30pm permit holders CA-B or pay by phone 020 3003 2532 quoting location 0000 (Eton Rd), max stay 2 hours
SRP2	Mon-Fri 9am-6.30pm, Sat 9.30am-1.30pm permit holders CA-B or pay by phone 020 3003 2532 quoting location 0000 (England's Lane), max stay 2 hours
SRP3	Mon-Fri 9am-6.30pm, Sat 9.30am-1.30pm permit holders CA-B or pay by phone 020 3003 2532 quoting location 0000 (Belize Gr), max stay 2 hours
SRP4	Mon-Fri 9am-6.30pm, Sat 9.30am-1.30pm permit holders CA-B or pay by phone 020 3003 2532 quoting location 0000 (Howell Rd), max stay 2 hours
PB1	Mon-Fri 9am-6.30pm, Sat 9.30am-1.30pm pay by phone 020 3003 2532 quoting location 0000 (Eton Rd), max stay 2 hours
PB2	Mon-Fri 9am-6.30pm, Sat 9.30am-1.30pm pay by phone 020 3003 2532 quoting location 0000 (Steele's Rd), max stay 2 hours
LB1	Loading only Mon-Fri 9am-6.30pm, Sat 9.30am-1.30pm
LB2	Loading only (24 hours / 7 days per week)
LB3	Loading only Mon- Sat 10am - 12noon
CC1	Car club permit holders only CC-04 (Parkhill Rd)
CC2	Car club permit holders only CC-111 (Antrim Grv)
CC3	Car club permit holders only CC-116 (Downside Cres)
EC	Electric vehicle recharging point only, max stay 3 hours
DB	Disabled badge holders only 3 hours max stay
RB	Residents permit holders only CA-B, Mon-Fri 9am-6.30pm, Sat 9.30am-1.30pm
	New 24/7 mandatory cycle lanes and cycle logos (dia 1057)
S4-0-0	Remove existing traffic signs regulation and general direction diagram number to storage

- NOTES:**
- ALL ITEMS SHOWN RED ARE TO BE REMOVED, GREY ARE TO BE MAINTAINED AND BLACK ARE TO BE INSTALLED AS PART OF WORK
 - THIS DRAWING IS BASED ON CD SURVEYS LTD TOPOGRAPHICAL SURVEY DRAWING NO. 2008045 - HAVERSTOCK HILL, LONDON FINAL
 - THIS AND ALL DRAWINGS ARE TO BE READ IN CONJUNCTION WITH THE SPECIFICATION FOR HIGHWAY WORKS AND OTHER SCHEME DRAWINGS
 - IF IN DOUBT OF ANY ASPECT OF THE DESIGN REFER TO THE LEAD DESIGNER FOR CLARIFICATION
 - EXISTING ACCESSES SHOULD BE MAINTAINED AT ALL TIMES AND NOT OBSTRUCTED UNLESS WITH PRIOR CONSENT FROM AFFECTED PARTIES
 - A MINIMUM FOOTWAY WIDTH OF 1.5M (OR AN ABSOLUTE MINIMUM OF 1M, OVER A MAXIMUM LENGTH OF 6M) SHOULD BE MAINTAINED DURING SITE CLEARANCE
 - ALL EXISTING LIGHTING COLUMNS, ILLUMINATED BOLLARDS OR ROAD SIGNS ARE TO BE DISCONNECTED AND MADE SAFE BEFORE REMOVALS
 - CONTRACTOR TO ENSURE TREE ROOTS ARE PROTECTED DURING EXCAVATION WORKS AROUND TREES
 - WAND ORCAS ARE TO BE POSITIONED ON THE INSIDE OF MANDATORY CYCLE LANE MARKINGS
 - MANDATORY CYCLE LANE DIMENSIONS ARE FROM THE KERB FACE TO THE OUTSIDE OF THE MANDATORY WHITE LINE MARKINGS

Rev	By	Date	Amendments

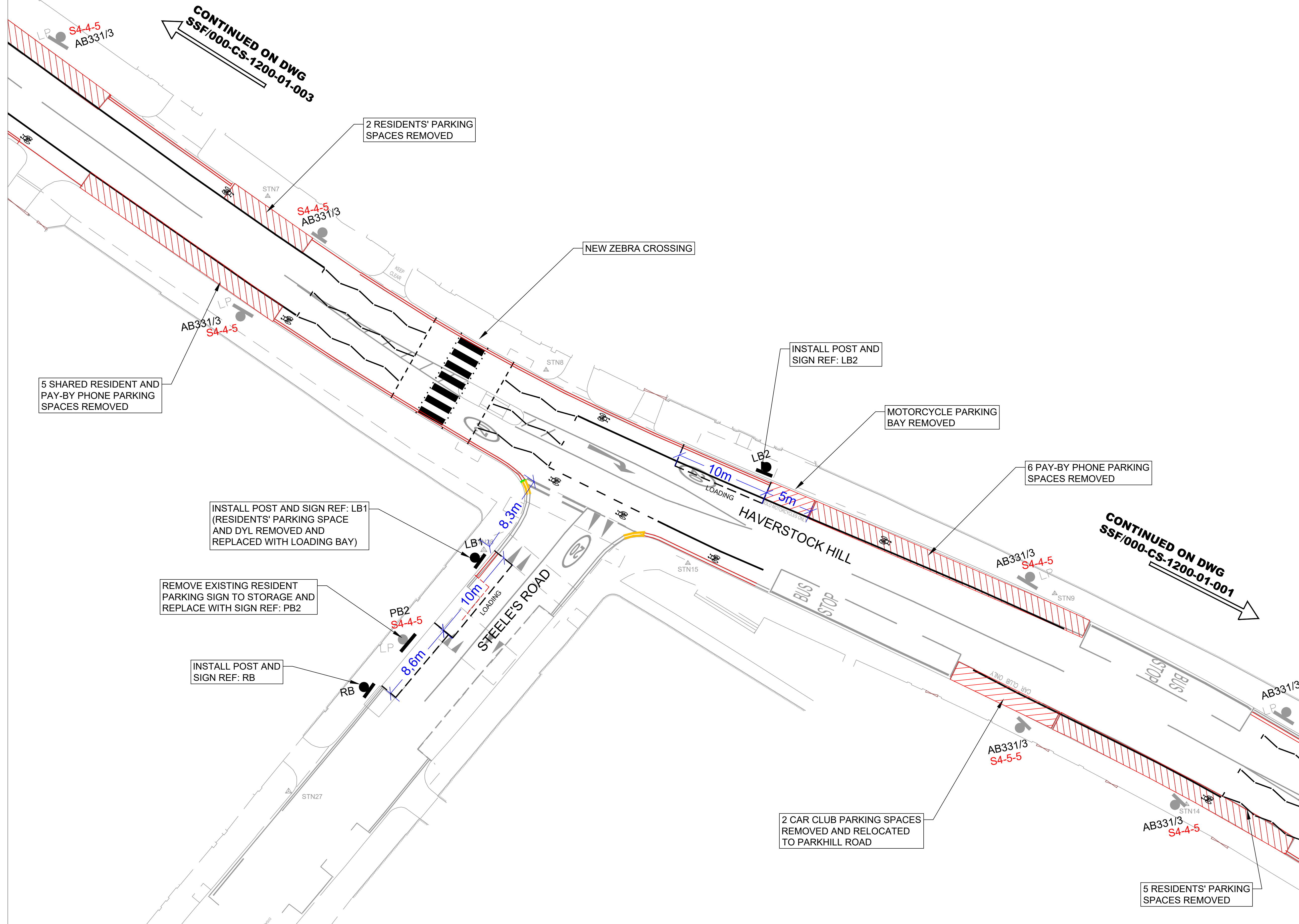
Camden
 Design Team
 Transport Strategy Service
 London Borough of Camden
 5 Pancras Square
 Tel 020 7974 5551, Fax 020 7974 6952
 DX 2106 Euston, Minicom 020 7974 6866



Project
**CYCLE POP-UP SCHEME
 HAVERSTOCK HILL**

Drawing Title
**REVISED PARKING SIGNAGE AND BAYS
 DETAILS**

Scale 1 : 200 @ A1	Date OCT 2020
Drawn By WH	File Ref
Checked By SS	Dwg Name CYCLE POP-UP
Drawing Location P:ATE****	
Drawing Number SSF/000-CS-1200-01-001	Rev. -



KEY:

- Install new post and sign (check signage reference)
- Install new sign on existing post
- Install new sign on existing lamp post
- Remove post to tip and sign to storage
- Remove sign from existing post to storage
- Remove sign from existing lamp post to storage
- New bay or refresh existing bay markings
- New disabled bay markings
- New loading bay markings
- New electric vehicle charging bay markings
- New car club bay markings
- Bay markings to be removed
- New double yellow line markings
- New yellow line termination markings
- New single yellow line markings
- Waiting restriction markings to be removed

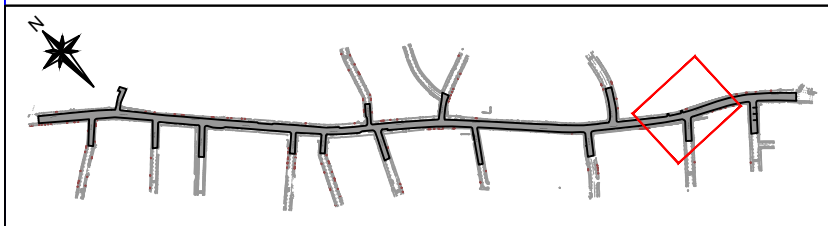
AB331/3

SRP1	Mon-Fri 9am-6.30pm, Sat 9.30am-1.30pm permit holders CA-B or pay by phone 020 3003 2532 quoting location 0000 (Elton Rd), max stay 2 hours
SRP2	Mon-Fri 9am-6.30pm, Sat 9.30am-1.30pm permit holders CA-B or pay by phone 020 3003 2532 quoting location 0000 (England's Lane), max stay 2 hours
SRP3	Mon-Fri 9am-6.30pm, Sat 9.30am-1.30pm permit holders CA-B or pay by phone 020 3003 2532 quoting location 0000 (Belize Gr), max stay 2 hours
SRP4	Mon-Fri 9am-6.30pm, Sat 9.30am-1.30pm permit holders CA-B or pay by phone 020 3003 2532 quoting location 0000 (Howett Rd), max stay 2 hours
PB1	Mon-Fri 9am-6.30pm, Sat 9.30am-1.30pm pay by phone 020 3003 2532 quoting location 0000 (Elton Rd), max stay 2 hours
PB2	Mon-Fri 9am-6.30pm, Sat 9.30am-1.30pm pay by phone 020 3003 2532 quoting location 0000 (Steele's Rd), max stay 2 hours
LB1	Loading only Mon-Fri 9am-6.30pm, Sat 9.30am-1.30pm
LB2	Loading only (24 hours / 7 days per week)
LB3	Loading only Mon- Sat 10am - 12noon
CC1	Car club permit holders only CC-04 (Parkhill Rd)
CC2	Car club permit holders only CC-111 (Antrim Grv)
CC3	Car club permit holders only CC-16 (Downside Cres)
EC	Electric vehicle recharging point only, max stay 3 hours
DB	Disabled badge holders only 3 hours max stay
RB	Residents permit holders only CA-B, Mon-Fri 9am-6.30pm, Sat 9.30am-1.30pm
	New 24/7 mandatory cycle lanes and cycle logos (dia 1057)
S4-0-0	Remove existing traffic signs regulation and general direction diagram number to storage

- NOTES:**
- ALL ITEMS SHOWN RED ARE TO BE REMOVED, GREY ARE TO BE MAINTAINED AND BLACK ARE TO BE INSTALLED AS PART OF WORK
 - THIS DRAWING IS BASED ON CD SURVEYS LTD TOPOGRAPHICAL SURVEY DRAWING NO. 2008045 - HAVERSTOCK HILL, LONDON FINAL
 - THIS AND ALL DRAWINGS ARE TO BE READ IN CONJUNCTION WITH THE SPECIFICATION FOR HIGHWAY WORKS AND OTHER SCHEME DRAWINGS
 - IF IN DOUBT OF ANY ASPECT OF THE DESIGN REFER TO THE LEAD DESIGNER FOR CLARIFICATION
 - EXISTING ACCESSES SHOULD BE MAINTAINED AT ALL TIMES AND NOT OBSTRUCTED UNLESS WITH PRIOR CONSENT FROM AFFECTED PARTIES
 - A MINIMUM FOOTWAY WIDTH OF 1.5M (OR AN ABSOLUTE MINIMUM OF 1M, OVER A MAXIMUM LENGTH OF 6M) SHOULD BE MAINTAINED DURING SITE CLEARANCE
 - ALL EXISTING LIGHTING COLUMNS, ILLUMINATED BOLLARDS OR ROAD SIGNS ARE TO BE DISCONNECTED AND MADE SAFE BEFORE REMOVALS
 - CONTRACTOR TO ENSURE TREE ROOTS ARE PROTECTED DURING EXCAVATION WORKS AROUND TREES.
 - WAND ORCAS ARE TO BE POSITIONED ON THE INSIDE OF MANDATORY CYCLE LANE MARKINGS
 - MANDATORY CYCLE LANE DIMENSIONS ARE FROM THE KERB FACE TO THE OUTSIDE OF THE MANDATORY WHITE LINE MARKINGS

Rev	By	Date	Amendments

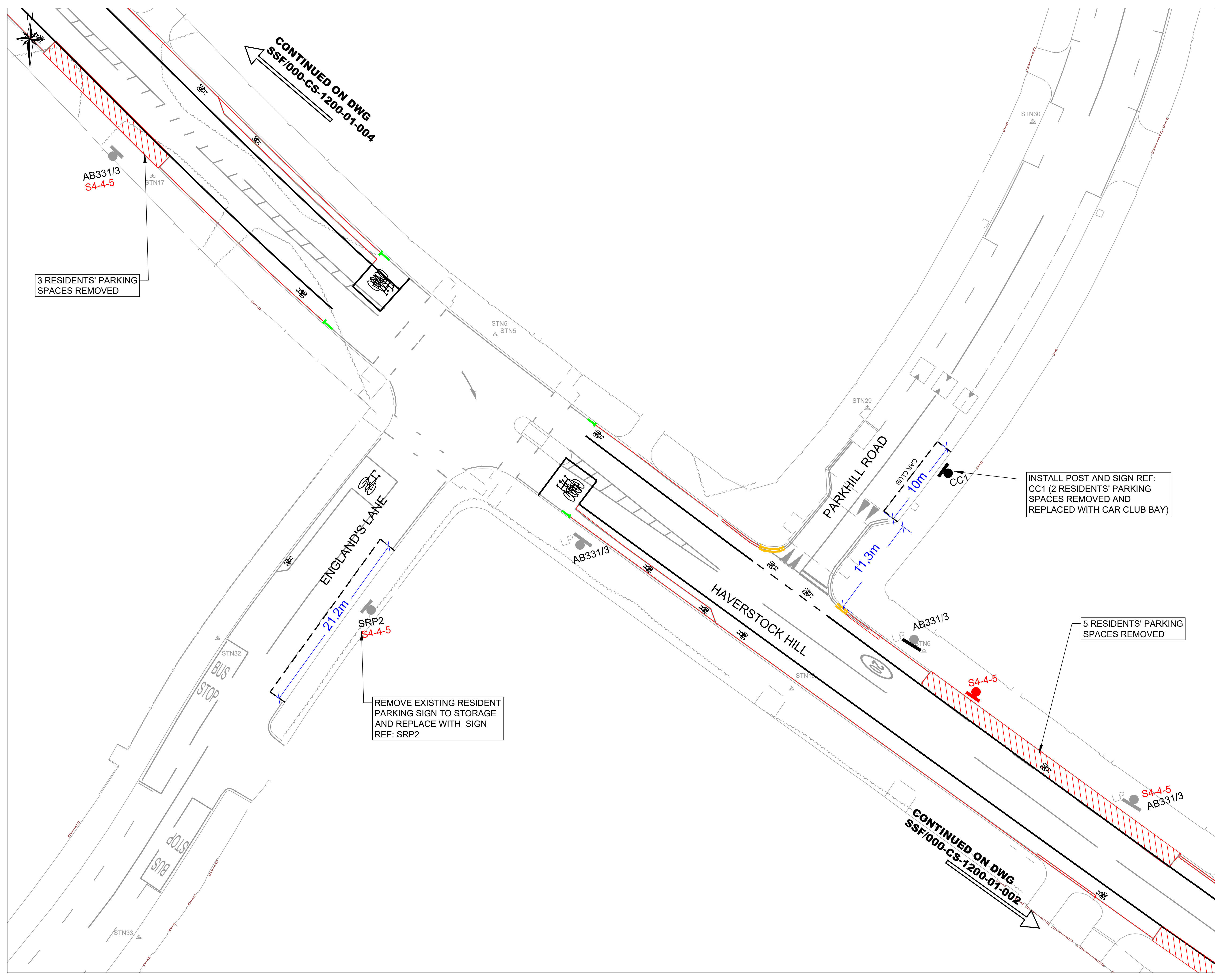
Camden
 Design Team
 Transport Strategy Service
 London Borough of Camden
 5 Pancras Square
 Tel 020 7974 5551, Fax 020 7974 6952
 DX 2106 Euston, Minicom 020 7974 6866



Project
**CYCLE POP-UP SCHEME
 HAVERSTOCK HILL**

Drawing Title
**REVISED PARKING SIGNAGE AND BAYS
 DETAILS**

Scale 1 : 200 @ A1	Date OCT 2020
Drawn By WH	File Ref
Checked By SS	Dwg Name CYCLE POP-UP
Drawing Location P:\ATE***	
Drawing Number SSF/000-CS-1200-01-002	Rev. -



- KEY:**
- Install new post and sign (check signage reference)
 - Install new sign on existing post
 - Install new sign on existing lamp post
 - Remove post to tip and sign to storage
 - Remove sign form existing post to storage
 - Remove sign form existing lamp post to storage
 - New bay or refresh existing bay markings
 - New disabled bay markings
 - New loading bay markings
 - New electric vehicle charging bay markings
 - New car club bay markings
 - Bay markings to be removed
 - New double yellow line markings
 - New yellow line termination markings
 - New single yellow line markings
 - Waiting restriction markings to be removed

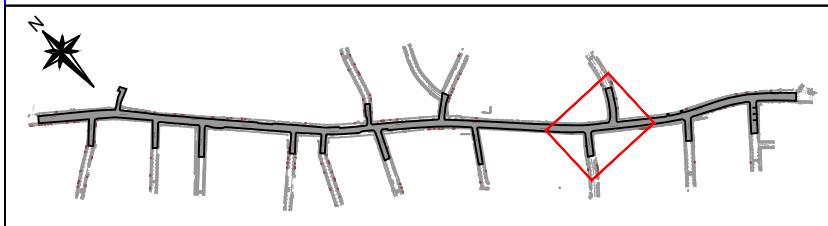
AB331/3

Code	Description
SRP1	Mon-Fri 9am-6.30pm, Sat 9.30am-1.30pm permit holders CA-B or pay by phone 020 3003 2532 quoting location 0000 (Eton Rd), max stay 2 hours
SRP2	Mon-Fri 9am-6.30pm, Sat 9.30am-1.30pm permit holders CA-B or pay by phone 020 3003 2532 quoting location 0000 (Englands Lane), max stay 2 hours
SRP3	Mon-Fri 9am-6.30pm, Sat 9.30am-1.30pm permit holders CA-B or pay by phone 020 3003 2532 quoting location 0000 (Belize Gr), max stay 2 hours
SRP4	Mon-Fri 9am-6.30pm, Sat 9.30am-1.30pm permit holders CA-B or pay by phone 020 3003 2532 quoting location 0000 (Howell Rd), max stay 2 hours
PB1	Mon-Fri 9am-6.30pm, Sat 9.30am-1.30pm pay by phone 020 3003 2532 quoting location 0000 (Eton Rd), max stay 2 hours
PB2	Mon-Fri 9am-6.30pm, Sat 9.30am-1.30pm pay by phone 020 3003 2532 quoting location 0000 (Steeles Rd), max stay 2 hours
LB1	Loading only Mon-Fri 9am-6.30pm, Sat 9.30am-1.30pm
LB2	Loading only (24 hours / 7 days per week)
LB3	Loading only Mon- Sat 10am - 12noon
CC1	Car club permit holders only CC-04 (Parkhill Rd)
CC2	Car club permit holders only CC-111 (Antrim Grv)
CC3	Car club permit holders only CC-16 (Downside Cres)
EC	Electric vehicle recharging point only, max stay 3 hours
DB	Disabled badge holders only 3 hours max stay
RB	Residents permit holders only CA-B, Mon-Fri 9am-6.30pm, Sat 9.30am-1.30pm
S4-0	New 24/7 mandatory cycle lanes and cycle logos (dia 1057)
S4-0-0	Remove existing traffic signs regulation and general direction diagram number to storage

- NOTES:**
- ALL ITEMS SHOWN RED ARE TO BE REMOVED, GREY ARE TO BE MAINTAINED AND BLACK ARE TO BE INSTALLED AS PART OF WORK
 - THIS DRAWING IS BASED ON CD SURVEYS LTD TOPOGRAPHICAL SURVEY DRAWING NO. 2008046 - HAVERSTOCK HILL, LONDON FINAL
 - THIS AND ALL DRAWINGS ARE TO BE READ IN CONJUNCTION WITH THE SPECIFICATION FOR HIGHWAY WORKS AND OTHER SCHEME DRAWINGS
 - IF IN DOUBT OF ANY ASPECT OF THE DESIGN REFER TO THE LEAD DESIGNER FOR CLARIFICATION
 - EXISTING ACCESSES SHOULD BE MAINTAINED AT ALL TIMES AND NOT OBSTRUCTED UNLESS WITH PRIOR CONSENT FROM AFFECTED PARTIES
 - A MINIMUM FOOTWAY WIDTH OF 1.5M (OR AN ABSOLUTE MINIMUM OF 1M, OVER A MAXIMUM LENGTH OF 6M) SHOULD BE MAINTAINED DURING SITE CLEARANCE
 - ALL EXISTING LIGHTING COLUMNS, ILLUMINATED BOLLARDS OR ROAD SIGNS ARE TO BE DISCONNECTED AND MADE SAFE BEFORE REMOVALS
 - CONTRACTOR TO ENSURE TREE ROOTS ARE PROTECTED DURING EXCAVATION WORKS AROUND TREES.
 - WAND ORCAS ARE TO BE POSITIONED ON THE INSIDE OF MANDATORY CYCLE LANE MARKINGS
 - MANDATORY CYCLE LANE DIMENSIONS ARE FROM THE KERB FACE TO THE OUTSIDE OF THE MANDATORY WHITE LINE MARKINGS

Rev	By	Date	Amendments

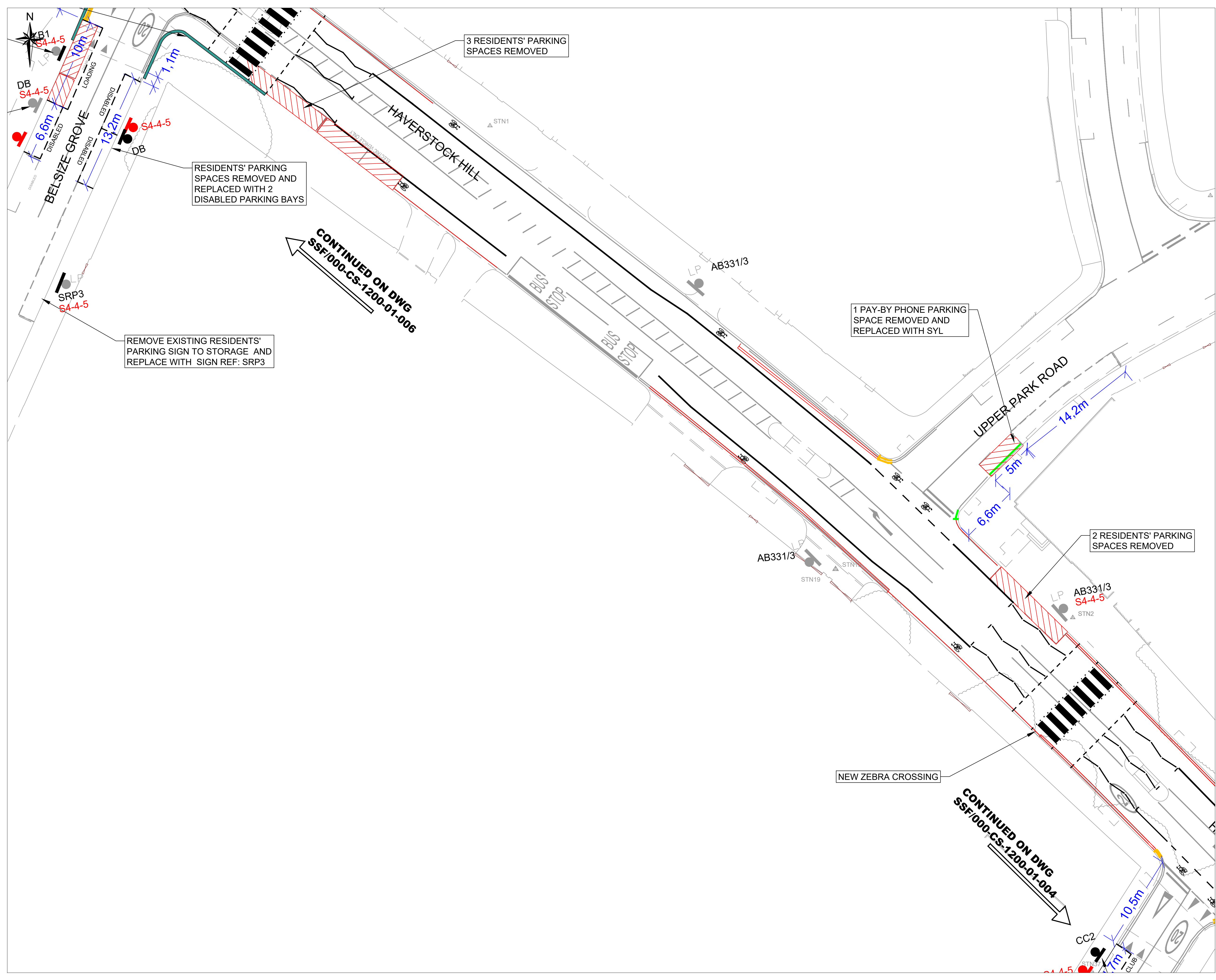
Camden
 Design Team
 Transport Strategy Service
 London Borough of Camden
 5 Pancras Square
 Tel 020 7974 5551, Fax 020 7974 6952
 DX 2106 Euston, Minicom 020 7974 6866



Project
**CYCLE POP-UP SCHEME
 HAVERSTOCK HILL**

Drawing Title
**REVISED PARKING SIGNAGE AND BAYS
 DETAILS**

Scale 1 : 200 @ A1	Date OCT 2020
Drawn By WH	File Ref
Checked By SS	Dwg Name CYCLE POP-UP
Drawing Location P:\TE***	
Drawing Number SSF/000-CS-1200-01-003	Rev. -



KEY:

- Install new post and sign (check signage reference)
- Install new sign on existing post
- Install new sign on existing lamp post
- Remove post to tip and sign to storage
- Remove sign from existing post to storage
- Remove sign from existing lamp post to storage
- New bay or refresh existing bay markings
- New disabled bay markings
- New loading bay markings
- New electric vehicle charging bay markings
- New car club bay markings
- Bay markings to be removed
- New double yellow line markings
- New yellow line termination markings
- New single yellow line markings
- Walling restriction markings to be removed

AB331/3

COVID-19							
	Cycle lane						
<table border="1"> <tr> <th>Sign Ref</th> <th>Location</th> <th>Notes</th> </tr> <tr> <td>S4-4-5</td> <td>Belsize Grove</td> <td>Remove existing traffic signs regulation and general direction diagram number to storage</td> </tr> </table>		Sign Ref	Location	Notes	S4-4-5	Belsize Grove	Remove existing traffic signs regulation and general direction diagram number to storage
Sign Ref	Location	Notes					
S4-4-5	Belsize Grove	Remove existing traffic signs regulation and general direction diagram number to storage					

SRP1 Mon-Fri 9am-6.30pm, Sat 9.30am-1.30pm permit holders CA-B or pay by phone 020 3003 2532 quoting location 0000 (Eton Rd), max stay 2 hours

SRP2 Mon-Fri 9am-6.30pm, Sat 9.30am-1.30pm permit holders CA-B or pay by phone 020 3003 2532 quoting location 0000 (England's Lane), max stay 2 hours

SRP3 Mon-Fri 9am-6.30pm, Sat 9.30am-1.30pm permit holders CA-B or pay by phone 020 3003 2532 quoting location 0000 (Belize Gr), max stay 2 hours

SRP4 Mon-Fri 9am-6.30pm, Sat 9.30am-1.30pm permit holders CA-B or pay by phone 020 3003 2532 quoting location 0000 (Howell Rd), max stay 2 hours

PB1 Mon-Fri 9am-6.30pm, Sat 9.30am-1.30pm pay by phone 020 3003 2532 quoting location 0000 (Eton Rd), max stay 2 hours

PB2 Mon-Fri 9am-6.30pm, Sat 9.30am-1.30pm pay by phone 020 3003 2532 quoting location 0000 (Steeles Rd), max stay 2 hours

LB1 Loading only Mon-Fri 9am-6.30pm, Sat 9.30am-1.30pm

LB2 Loading only (24 hours / 7 days per week)

LB3 Loading only Mon-Sat 10am - 12noon

CC1 Car club permit holders only CC-64 (Parkhill Rd)

CC2 Car club permit holders only CC-111 (Antrim Grv)

CC3 Car club permit holders only CC-16 (Downside Cres)

EC Electric vehicle recharging point only, max stay 3 hours

DB Disabled badge holders only 3 hours max stay

RB Residents permit holders only CA-B, Mon-Fri 9am-6.30pm, Sat 9.30am-1.30pm

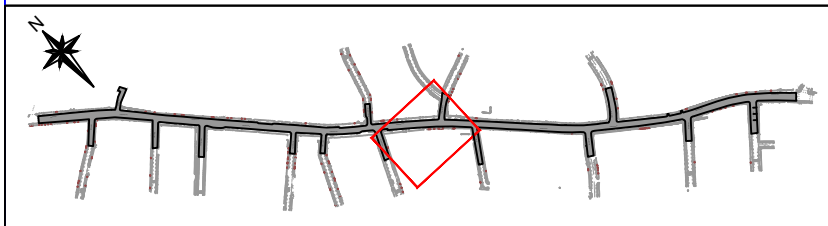
RB New 24/7 mandatory cycle lanes and cycle logos (dia 1057)

S4-4-0 Remove existing traffic signs regulation and general direction diagram number to storage

- NOTES:**
- ALL ITEMS SHOWN RED ARE TO BE REMOVED, GREY ARE TO BE MAINTAINED AND BLACK ARE TO BE INSTALLED AS PART OF WORK
 - THIS DRAWING IS BASED ON CD SURVEYS LTD TOPOGRAPHICAL SURVEY DRAWING NO. 2008046 - HAVERSTOCK HILL, LONDON FINAL
 - THIS AND ALL DRAWINGS ARE TO BE READ IN CONJUNCTION WITH THE SPECIFICATION FOR HIGHWAY WORKS AND OTHER SCHEME DRAWINGS
 - IF IN DOUBT OF ANY ASPECT OF THE DESIGN REFER TO THE LEAD DESIGNER FOR CLARIFICATION
 - EXISTING ACCESSES SHOULD BE MAINTAINED AT ALL TIMES AND NOT OBSTRUCTED UNLESS WITH PRIOR CONSENT FROM AFFECTED PARTIES
 - A MINIMUM FOOTWAY WIDTH OF 1.5M (OR AN ABSOLUTE MINIMUM OF 1M, OVER A MAXIMUM LENGTH OF 6M) SHOULD BE MAINTAINED DURING SITE CLEARANCE
 - ALL EXISTING LIGHTING COLUMNS, ILLUMINATED BOLLARDS OR ROAD SIGNS ARE TO BE DISCONNECTED AND MADE SAFE BEFORE REMOVALS
 - CONTRACTOR TO ENSURE TREE ROOTS ARE PROTECTED DURING EXCAVATION WORKS AROUND TREES
 - WAND ORCAS ARE TO BE POSITIONED ON THE INSIDE OF MANDATORY CYCLE LANE MARKINGS
 - MANDATORY CYCLE LANE DIMENSIONS ARE FROM THE KERB FACE TO THE OUTSIDE OF THE MANDATORY WHITE LINE MARKINGS

Rev	By	Date	Amendments

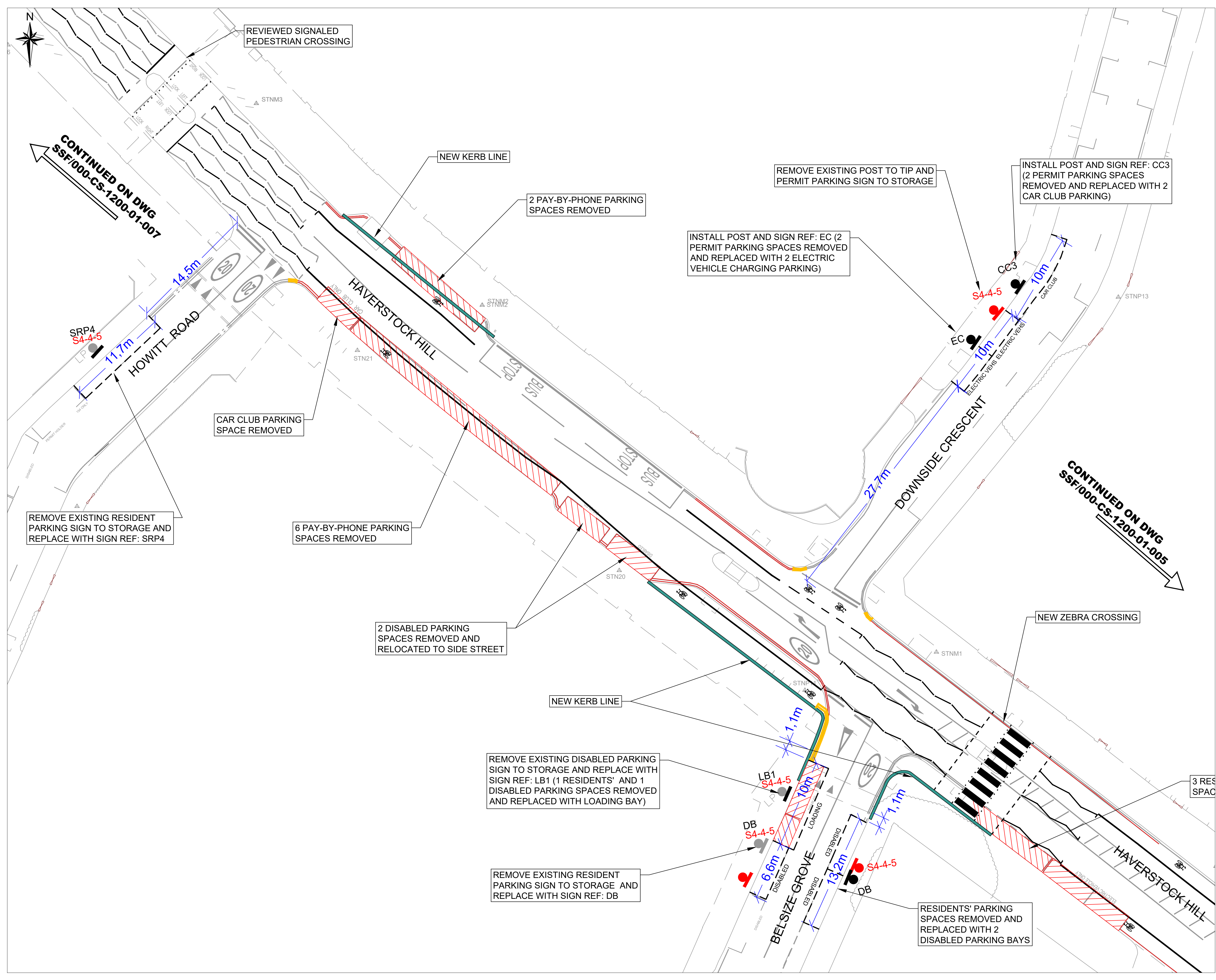
Camden
 Design Team
 Transport Strategy Service
 London Borough of Camden
 5 Pancras Square
 Tel 020 7974 5551, Fax 020 7974 6952
 DX 2106 Euston, Minicom 020 7974 6866



Project
**CYCLE POP-UP SCHEME
 HAVERSTOCK HILL**

Drawing Title
**REVISED PARKING SIGNAGE AND BAYS
 DETAILS**

Scale 1 : 200 @ A1	Date OCT 2020
Drawn By WH	File Ref
Checked By SS	Dwg Name CYCLE POP-UP
Drawing Location P:ATE***	Drawing Number
Drawing Number SSF/000-CS-1200-01-005	Rev. -



- KEY:**
- Install new post and sign (check signage reference)
 - Install new sign on existing post
 - Install new sign on existing lamp post
 - Remove post to tip and sign to storage
 - Remove sign from existing post to storage
 - Remove sign from existing lamp post to storage
 - New bay or refresh existing bay markings
 - New disabled bay markings
 - New loading bay markings
 - New electric vehicle charging bay markings
 - New car club bay markings
 - Bay markings to be removed
 - New double yellow line markings
 - New yellow line termination markings
 - New single yellow line markings
 - Waiting restriction markings to be removed

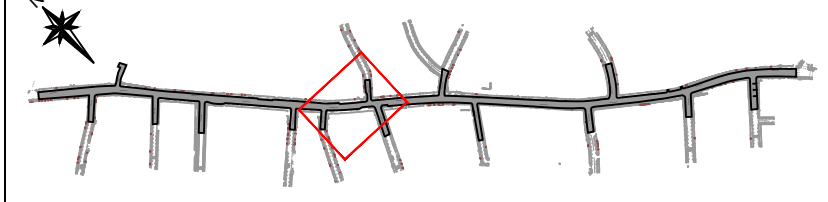
AB331/3

Code	Description
SRP1	Mon-Fri 9am-6.30pm, Sat 9.30am-1.30pm permit holders CA-B or pay by phone 020 3003 2532 quoting location 0000 (Elton Rd), max stay 2 hours
SRP2	Mon-Fri 9am-6.30pm, Sat 9.30am-1.30pm permit holders CA-B or pay by phone 020 3003 2532 quoting location 0000 (England's Lane), max stay 2 hours
SRP3	Mon-Fri 9am-6.30pm, Sat 9.30am-1.30pm permit holders CA-B or pay by phone 020 3003 2532 quoting location 0000 (Belize Gr), max stay 2 hours
SRP4	Mon-Fri 9am-6.30pm, Sat 9.30am-1.30pm permit holders CA-B or pay by phone 020 3003 2532 quoting location 0000 (Howitt Rd), max stay 2 hours
PB1	Mon-Fri 9am-6.30pm, Sat 9.30am-1.30pm pay by phone 020 3003 2532 quoting location 0000 (Elton Rd), max stay 2 hours
PB2	Mon-Fri 9am-6.30pm, Sat 9.30am-1.30pm pay by phone 020 3003 2532 quoting location 0000 (Sleeve's Rd), max stay 2 hours
LB1	Loading only Mon-Fri 9am-6.30pm, Sat 9.30am-1.30pm
LB2	Loading only (24 hours / 7 days per week)
LB3	Loading only Mon-Sat 10am - 12noon
CC1	Car club permit holders only CC-04 (Parkhill Rd)
CC2	Car club permit holders only CC-111 (Antrim Grv)
CC3	Car club permit holders only CC-116 (Downside Cres)
EC	Electric vehicle recharging point only, max stay 3 hours
DB	Disabled badge holders only 3 hours max stay
RB	Residents permit holders only CA-B, Mon-Fri 9am-6.30pm, Sat 9.30am-1.30pm
	New 24/7 mandatory cycle lanes and cycle logos (dia 1057)
S4-0-0	Remove existing traffic signs regulation and general direction diagram number to storage

- NOTES:**
- ALL ITEMS SHOWN RED ARE TO BE REMOVED, GREY ARE TO BE MAINTAINED AND BLACK ARE TO BE INSTALLED AS PART OF WORK
 - THIS DRAWING IS BASED ON CD SURVEYS LTD TOPOGRAPHICAL SURVEY DRAWING NO. 2008046 - HAVERSTOCK HILL, LONDON FINAL
 - THIS AND ALL DRAWINGS ARE TO BE READ IN CONJUNCTION WITH THE SPECIFICATION FOR HIGHWAY WORKS AND OTHER SCHEME DRAWINGS
 - IF IN DOUBT OF ANY ASPECT OF THE DESIGN REFER TO THE LEAD DESIGNER FOR CLARIFICATION
 - EXISTING ACCESSES SHOULD BE MAINTAINED AT ALL TIMES AND NOT OBSTRUCTED UNLESS WITH PRIOR CONSENT FROM AFFECTED PARTIES
 - A MINIMUM FOOTWAY WIDTH OF 1.5M (OR AN ABSOLUTE MINIMUM OF 1M, OVER A MAXIMUM LENGTH OF 6M) SHOULD BE MAINTAINED DURING SITE CLEARANCE
 - ALL EXISTING LIGHTING COLUMNS, ILLUMINATED BOLLARDS OR ROAD SIGNS ARE TO BE DISCONNECTED AND MADE SAFE BEFORE REMOVALS
 - CONTRACTOR TO ENSURE TREE ROOTS ARE PROTECTED DURING EXCAVATION WORKS AROUND TREES
 - WAND ORCAS ARE TO BE POSITIONED ON THE INSIDE OF MANDATORY CYCLE LANE MARKINGS
 - MANDATORY CYCLE LANE DIMENSIONS ARE FROM THE KERB FACE TO THE OUTSIDE OF THE MANDATORY WHITE LINE MARKINGS

Rev	By	Date	Amendments

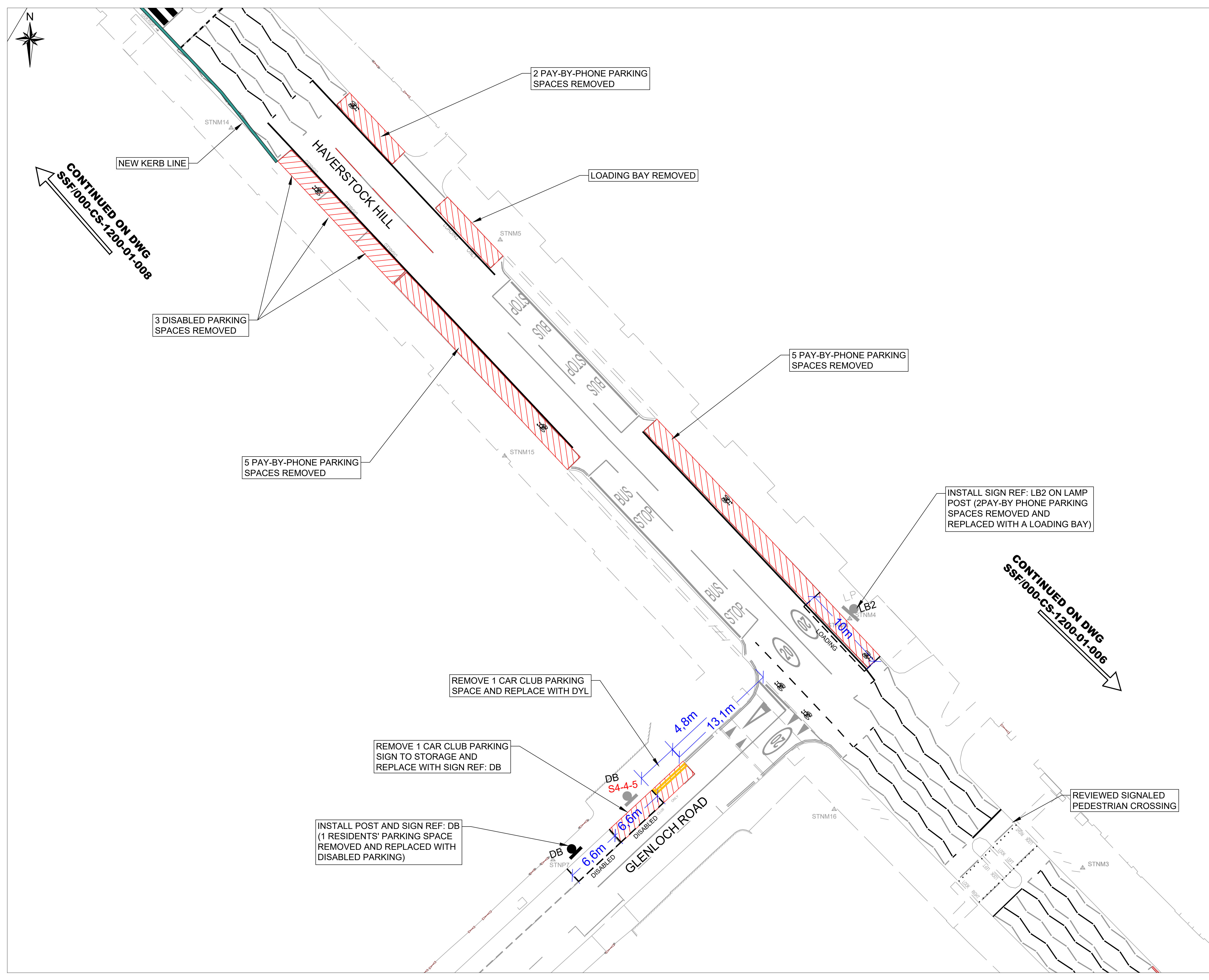
Camden
 Design Team
 Transport Strategy Service
 London Borough of Camden
 5 Pancras Square
 Tel 020 7974 5551, Fax 020 7974 6952
 DX 2106 Euston, Minicom 020 7974 6866



Project
**CYCLE POP-UP SCHEME
 HAVERSTOCK HILL**

Drawing Title
**REVISED PARKING SIGNAGE AND BAYS
 DETAILS**

Scale 1 : 200 @ A1	Date OCT 2020
Drawn By WH	File Ref
Checked By SS	Dwg Name CYCLE POP-UP
Drawing Location P:ATE****	Drawing Number
Drawing Number SSF/000-CS-1200-01-006	Rev.



CONTINUED ON DWG
SSF/000-CS-1200-01-008

CONTINUED ON DWG
SSF/000-CS-1200-01-006

KEY:

- Install new post and sign (check signage reference)
- Install new sign on existing post
- Install new sign on existing lamp post
- Remove post to tip and sign to storage
- Remove sign from existing post to storage
- Remove sign from existing lamp post to storage
- New bay or refresh existing bay markings
- New disabled bay markings
- New loading bay markings
- New electric vehicle charging bay markings
- New car club bay markings
- Bay markings to be removed
- New double yellow line markings
- New yellow line termination markings
- New single yellow line markings
- Waiting restriction markings to be removed

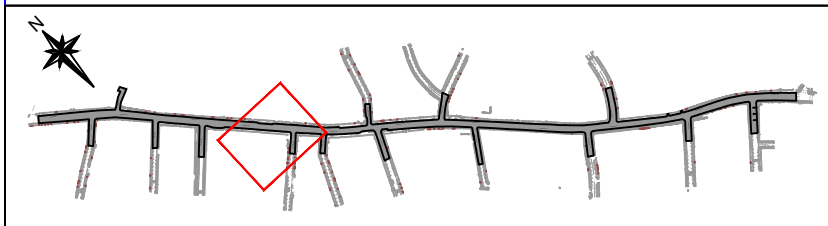
AB331/3

SRP1	Mon-Fri 9am-6.30pm, Sat 9.30am-1.30pm permit holders CA-B or pay by phone 020 3003 2532 quoting location 0000 (Elton Rd), max stay 2 hours
SRP2	Mon-Fri 9am-6.30pm, Sat 9.30am-1.30pm permit holders CA-B or pay by phone 020 3003 2532 quoting location 0000 (England's Lane), max stay 2 hours
SRP3	Mon-Fri 9am-6.30pm, Sat 9.30am-1.30pm permit holders CA-B or pay by phone 020 3003 2532 quoting location 0000 (Belize Gr), max stay 2 hours
SRP4	Mon-Fri 9am-6.30pm, Sat 9.30am-1.30pm permit holders CA-B or pay by phone 020 3003 2532 quoting location 0000 (Howell Rd), max stay 2 hours
PB1	Mon-Fri 9am-6.30pm, Sat 9.30am-1.30pm pay by phone 020 3003 2532 quoting location 0000 (Elton Rd), max stay 2 hours
PB2	Mon-Fri 9am-6.30pm, Sat 9.30am-1.30pm pay by phone 020 3003 2532 quoting location 0000 (Sleeve's Rd), max stay 2 hours
LB1	Loading only Mon-Fri 9am-6.30pm, Sat 9.30am-1.30pm
LB2	Loading only (24 hours / 7 days per week)
LB3	Loading only Mon- Sat 10am - 12noon
CC1	Car club permit holders only CC-04 (Parkhill Rd)
CC2	Car club permit holders only CC-111 (Antrim Grv)
CC3	Car club permit holders only CC-116 (Downside Cres)
EC	Electric vehicle recharging point only, max stay 3 hours
DB	Disabled badge holders only 3 hours max stay
RB	Residents permit holders only CA-B, Mon-Fri 9am-6.30pm, Sat 9.30am-1.30pm
	New 24/7 mandatory cycle lanes and cycle logos (dia 1057)
	Remove existing traffic signs regulation and general direction diagram number to storage

- NOTES:**
- ALL ITEMS SHOWN RED ARE TO BE REMOVED, GREY ARE TO BE MAINTAINED AND BLACK ARE TO BE INSTALLED AS PART OF WORK
 - THIS DRAWING IS BASED ON CD SURVEYS LTD TOPOGRAPHICAL SURVEY DRAWING NO. 2008046 - HAVERSTOCK HILL, LONDON FINAL
 - THIS AND ALL DRAWINGS ARE TO BE READ IN CONJUNCTION WITH THE SPECIFICATION FOR HIGHWAY WORKS AND OTHER SCHEME DRAWINGS
 - IF IN DOUBT OF ANY ASPECT OF THE DESIGN REFER TO THE LEAD DESIGNER FOR CLARIFICATION
 - EXISTING ACCESSES SHOULD BE MAINTAINED AT ALL TIMES AND NOT OBSTRUCTED UNLESS WITH PRIOR CONSENT FROM AFFECTED PARTIES
 - A MINIMUM FOOTWAY WIDTH OF 1.5M (OR AN ABSOLUTE MINIMUM OF 1M OVER A MAXIMUM LENGTH OF 6M) SHOULD BE MAINTAINED DURING SITE CLEARANCE
 - ALL EXISTING LIGHTING COLUMNS, ILLUMINATED BOLLARDS OR ROAD SIGNS ARE TO BE DISCONNECTED AND MADE SAFE BEFORE REMOVALS
 - CONTRACTOR TO ENSURE TREE ROOTS ARE PROTECTED DURING EXCAVATION WORKS AROUND TREES.
 - WAND ORCAS ARE TO BE POSITIONED ON THE INSIDE OF MANDATORY CYCLE LANE MARKINGS
 - MANDATORY CYCLE LANE DIMENSIONS ARE FROM THE KERB FACE TO THE OUTSIDE OF THE MANDATORY WHITE LINE MARKINGS

Rev	By	Date	Amendments

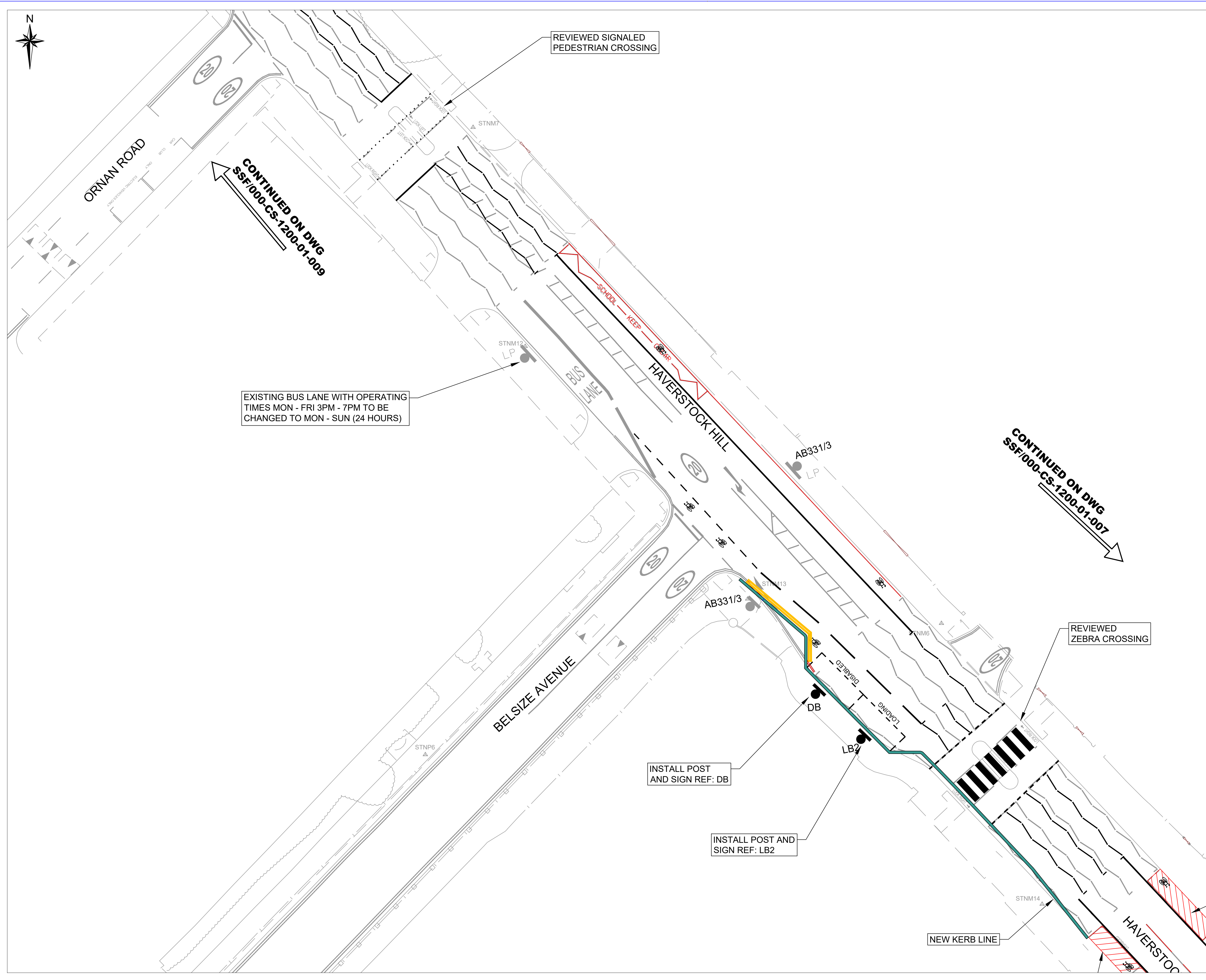
Camden
 Design Team
 Transport Strategy Service
 London Borough of Camden
 5 Pancras Square
 Tel 020 7974 5551, Fax 020 7974 6952
 DX 2106 Euston, Minicom 020 7974 6866



Project
**CYCLE POP-UP SCHEME
 HAVERSTOCK HILL**

Drawing Title
**REVISED PARKING SIGNAGE AND BAYS
 DETAILS**

Scale 1 : 200 @ A1	Date OCT 2020
Drawn By WH	File Ref
Checked By SS	Dwg Name CYCLE POP-UP
Drawing Location P:ATE***	
Drawing Number SSF/000-CS-1200-01-007	Rev. -



EXISTING BUS LANE WITH OPERATING TIMES MON - FRI 3PM - 7PM TO BE CHANGED TO MON - SUN (24 HOURS)

REVIEWED SIGNALLED PEDESTRIAN CROSSING

REVIEWED ZEBRA CROSSING

INSTALL POST AND SIGN REF: DB

INSTALL POST AND SIGN REF: LB2

NEW KERB LINE

- KEY:**
- Install new post and sign (check signage reference)
 - Install new sign on existing post
 - Install new sign on existing lamp post
 - Remove post to tip and sign to storage
 - Remove sign from existing post to storage
 - Remove sign from existing lamp post to storage
 - New bay or refresh existing bay markings
 - New disabled bay markings
 - New loading bay markings
 - New electric vehicle charging bay markings
 - New car club bay markings
 - Bay markings to be removed
 - New double yellow line markings
 - New yellow line termination markings
 - New single yellow line markings
 - Waiting restriction markings to be removed

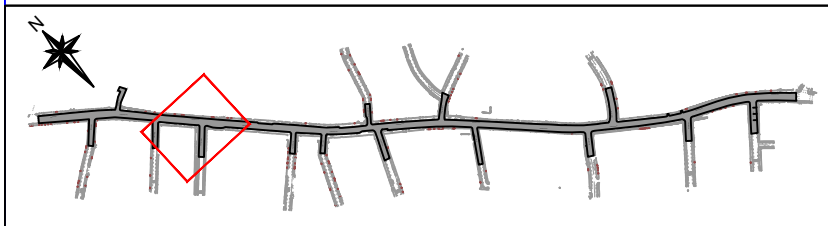
AB331/3

Code	Description
SRP1	Mon-Fri 9am-6.30pm, Sat 9.30am-1.30pm permit holders CA-B or pay by phone 020 3003 2532 quoting location 0000 (Eton Rd), max stay 2 hours
SRP2	Mon-Fri 9am-6.30pm, Sat 9.30am-1.30pm permit holders CA-B or pay by phone 020 3003 2532 quoting location 0000 (England's Lane), max stay 2 hours
SRP3	Mon-Fri 9am-6.30pm, Sat 9.30am-1.30pm permit holders CA-B or pay by phone 020 3003 2532 quoting location 0000 (Belize Gr), max stay 2 hours
SRP4	Mon-Fri 9am-6.30pm, Sat 9.30am-1.30pm permit holders CA-B or pay by phone 020 3003 2532 quoting location 0000 (Howell Rd), max stay 2 hours
PB1	Mon-Fri 9am-6.30pm, Sat 9.30am-1.30pm pay by phone 020 3003 2532 quoting location 0000 (Eton Rd), max stay 2 hours
PB2	Mon-Fri 9am-6.30pm, Sat 9.30am-1.30pm pay by phone 020 3003 2532 quoting location 0000 (Belize Gr), max stay 2 hours
LB1	Loading only Mon-Fri 9am-6.30pm, Sat 9.30am-1.30pm
LB2	Loading only (24 hours / 7 days per week)
LB3	Loading only Mon- Sat 10am - 12noon
CC1	Car club permit holders only CC-04 (Parkhill Rd)
CC2	Car club permit holders only CC-111 (Antrim Grv)
CC3	Car club permit holders only CC-116 (Downside Cres)
EC	Electric vehicle recharging point only, max stay 3 hours
DB	Disabled badge holders only 3 hours max stay
RB	Residents permit holders only CA-B, Mon-Fri 9am-6.30pm, Sat 9.30am-1.30pm
24/7	New 24/7 mandatory cycle lanes and cycle logos (dia 1057)
S4-0	Remove existing traffic signs regulation and general direction diagram number to storage

- NOTES:**
- ALL ITEMS SHOWN RED ARE TO BE REMOVED, GREY ARE TO BE MAINTAINED AND BLACK ARE TO BE INSTALLED AS PART OF WORK
 - THIS DRAWING IS BASED ON CD SURVEYS LTD TOPOGRAPHICAL SURVEY DRAWING NO. 2008046 - HAVERSTOCK HILL, LONDON FINAL
 - THIS AND ALL DRAWINGS ARE TO BE READ IN CONJUNCTION WITH THE SPECIFICATION FOR HIGHWAY WORKS AND OTHER SCHEME DRAWINGS
 - IF IN DOUBT OF ANY ASPECT OF THE DESIGN REFER TO THE LEAD DESIGNER FOR CLARIFICATION
 - EXISTING ACCESSES SHOULD BE MAINTAINED AT ALL TIMES AND NOT OBSTRUCTED UNLESS WITH PRIOR CONSENT FROM AFFECTED PARTIES
 - A MINIMUM FOOTWAY WIDTH OF 1.5M (OR AN ABSOLUTE MINIMUM OF 1M OVER A MAXIMUM LENGTH OF 6M) SHOULD BE MAINTAINED DURING SITE CLEARANCE
 - ALL EXISTING LIGHTING COLUMNS, ILLUMINATED BOLLARDS OR ROAD SIGNS ARE TO BE DISCONNECTED AND MADE SAFE BEFORE REMOVALS
 - CONTRACTOR TO ENSURE TREE ROOTS ARE PROTECTED DURING EXCAVATION WORKS AROUND TREES.
 - WAND ORCAS ARE TO BE POSITIONED ON THE INSIDE OF MANDATORY CYCLE LANE MARKINGS
 - MANDATORY CYCLE LANE DIMENSIONS ARE FROM THE KERB FACE TO THE OUTSIDE OF THE MANDATORY WHITE LINE MARKINGS

Rev	By	Date	Amendments

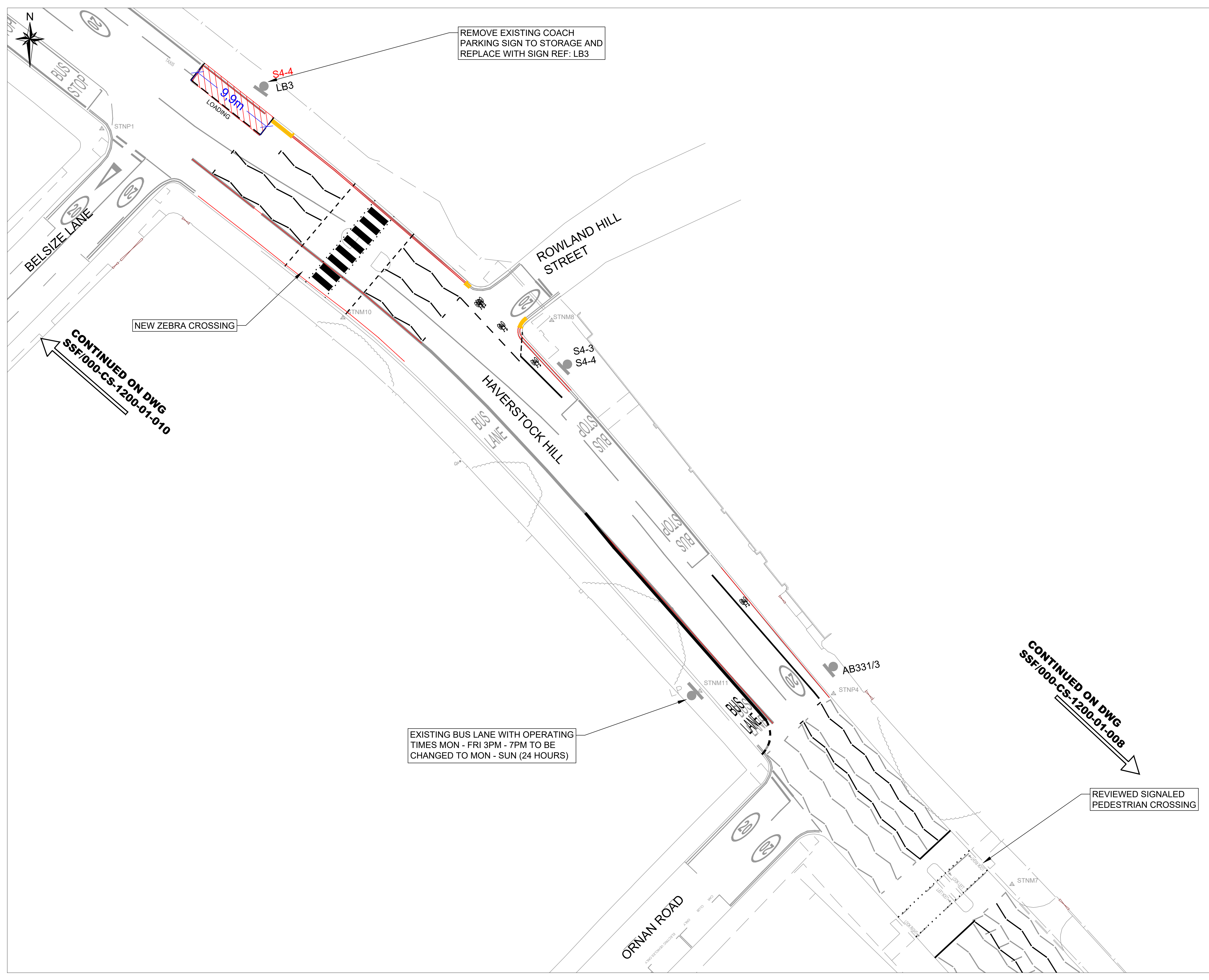
Camden
 Design Team
 Transport Strategy Service
 London Borough of Camden
 5 Pancras Square
 Tel 020 7974 5551, Fax 020 7974 6952
 DX 2106 Euston, Minicom 020 7974 6866



Project
**CYCLE POP-UP SCHEME
 HAVERSTOCK HILL**

Drawing Title
**REVISED PARKING SIGNAGE AND BAYS
 DETAILS**

Scale 1 : 200 @ A1	Date OCT 2020
Drawn By WH	File Ref
Checked By SS	Dwg Name CYCLE POP-UP
Drawing Location P:ATE***	
Drawing Number SSF/000-CS-1200-01-008	Rev. -



- KEY:**
- Install new post and sign (check signage reference)
 - Install new sign on existing post
 - Install new sign on existing lamp post
 - Remove post to tip and sign to storage
 - Remove sign from existing post to storage
 - Remove sign from existing lamp post to storage
 - New bay or refresh existing bay markings
 - New disabled bay markings
 - New loading bay markings
 - New electric vehicle charging bay markings
 - New car club bay markings
 - Bay markings to be removed
 - New double yellow line markings
 - New yellow line termination markings
 - New single yellow line markings
 - Waiting restriction markings to be removed

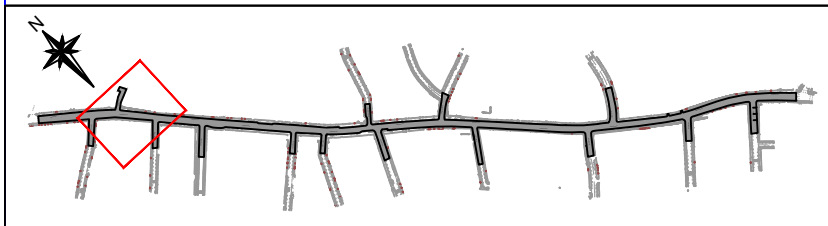
AB331/3

Code	Description
SRP1	Mon-Fri 9am-6.30pm, Sat 9.30am-1.30pm permit holders CA-B or pay by phone 020 3003 2532 quoting location 0000 (Eton Rd), max stay 2 hours
SRP2	Mon-Fri 9am-6.30pm, Sat 9.30am-1.30pm permit holders CA-B or pay by phone 020 3003 2532 quoting location 0000 (England's Lane), max stay 2 hours
SRP3	Mon-Fri 9am-6.30pm, Sat 9.30am-1.30pm permit holders CA-B or pay by phone 020 3003 2532 quoting location 0000 (Belsize Gr), max stay 2 hours
SRP4	Mon-Fri 9am-6.30pm, Sat 9.30am-1.30pm permit holders CA-B or pay by phone 020 3003 2532 quoting location 0000 (Howell Rd), max stay 2 hours
PB1	Mon-Fri 9am-6.30pm, Sat 9.30am-1.30pm pay by phone 020 3003 2532 quoting location 0000 (Eton Rd), max stay 2 hours
PB2	Mon-Fri 9am-6.30pm, Sat 9.30am-1.30pm pay by phone 020 3003 2532 quoting location 0000 (Steele's Rd), max stay 2 hours
LB1	Loading only Mon-Fri 9am-6.30pm, Sat 9.30am-1.30pm
LB2	Loading only (24 hours / 7 days per week)
LB3	Loading only Mon- Sat 10am - 12noon
CC1	Car club permit holders only CC-04 (Parkhill Rd)
CC2	Car club permit holders only CC-111 (Antrim Grv)
CC3	Car club permit holders only CC-116 (Downside Cres)
EC	Electric vehicle recharging point only, max stay 3 hours
DB	Disabled badge holders only 3 hours max stay
RB	Residents permit holders only CA-B, Mon-Fri 9am-6.30pm, Sat 9.30am-1.30pm
	New 24/7 mandatory cycle lanes and cycle logos (dia 1057)
S4-0	Remove existing traffic signs regulation and general direction diagram number to storage

- NOTES:**
- ALL ITEMS SHOWN RED ARE TO BE REMOVED, GREY ARE TO BE MAINTAINED AND BLACK ARE TO BE INSTALLED AS PART OF WORK
 - THIS DRAWING IS BASED ON CD SURVEYS LTD TOPOGRAPHICAL SURVEY DRAWING NO. 2008046 - HAVERSTOCK HILL, LONDON FINAL
 - THIS AND ALL DRAWINGS ARE TO BE READ IN CONJUNCTION WITH THE SPECIFICATION FOR HIGHWAY WORKS AND OTHER SCHEME DRAWINGS
 - IF IN DOUBT OF ANY ASPECT OF THE DESIGN REFER TO THE LEAD DESIGNER FOR CLARIFICATION
 - EXISTING ACCESSES SHOULD BE MAINTAINED AT ALL TIMES AND NOT OBSTRUCTED UNLESS WITH PRIOR CONSENT FROM AFFECTED PARTIES
 - A MINIMUM FOOTWAY WIDTH OF 1.5M (OR AN ABSOLUTE MINIMUM OF 1M, OVER A MAXIMUM LENGTH OF 6M) SHOULD BE MAINTAINED DURING SITE CLEARANCE
 - ALL EXISTING LIGHTING COLUMNS, ILLUMINATED BOLLARDS OR ROAD SIGNS ARE TO BE DISCONNECTED AND MADE SAFE BEFORE REMOVALS
 - CONTRACTOR TO ENSURE TREE ROOTS ARE PROTECTED DURING EXCAVATION WORKS AROUND TREES.
 - WAND ORCAS ARE TO BE POSITIONED ON THE INSIDE OF MANDATORY CYCLE LANE MARKINGS
 - MANDATORY CYCLE LANE DIMENSIONS ARE FROM THE KERB FACE TO THE OUTSIDE OF THE MANDATORY WHITE LINE MARKINGS

Rev	By	Date	Amendments

Camden
 Design Team
 Transport Strategy Service
 London Borough of Camden
 5 Pancras Square
 Tel 020 7974 5551, Fax 020 7974 6952
 DX 2106 Euston, Minicom 020 7974 6866



Project
**CYCLE POP-UP SCHEME
 HAVERSTOCK HILL**

Drawing Title
**REVISED PARKING SIGNAGE AND BAYS
 DETAILS**

Scale 1 : 200 @ A1	Date OCT 2020
Drawn By WH	File Ref
Checked By SS	Dwg Name CYCLE POP-UP
Drawing Location P:ATE****	
Drawing Number SSF/000-CS-1200-01-009	Rev. -

CONTINUED ON DWG
 SSF/000-CS-1200-01-010

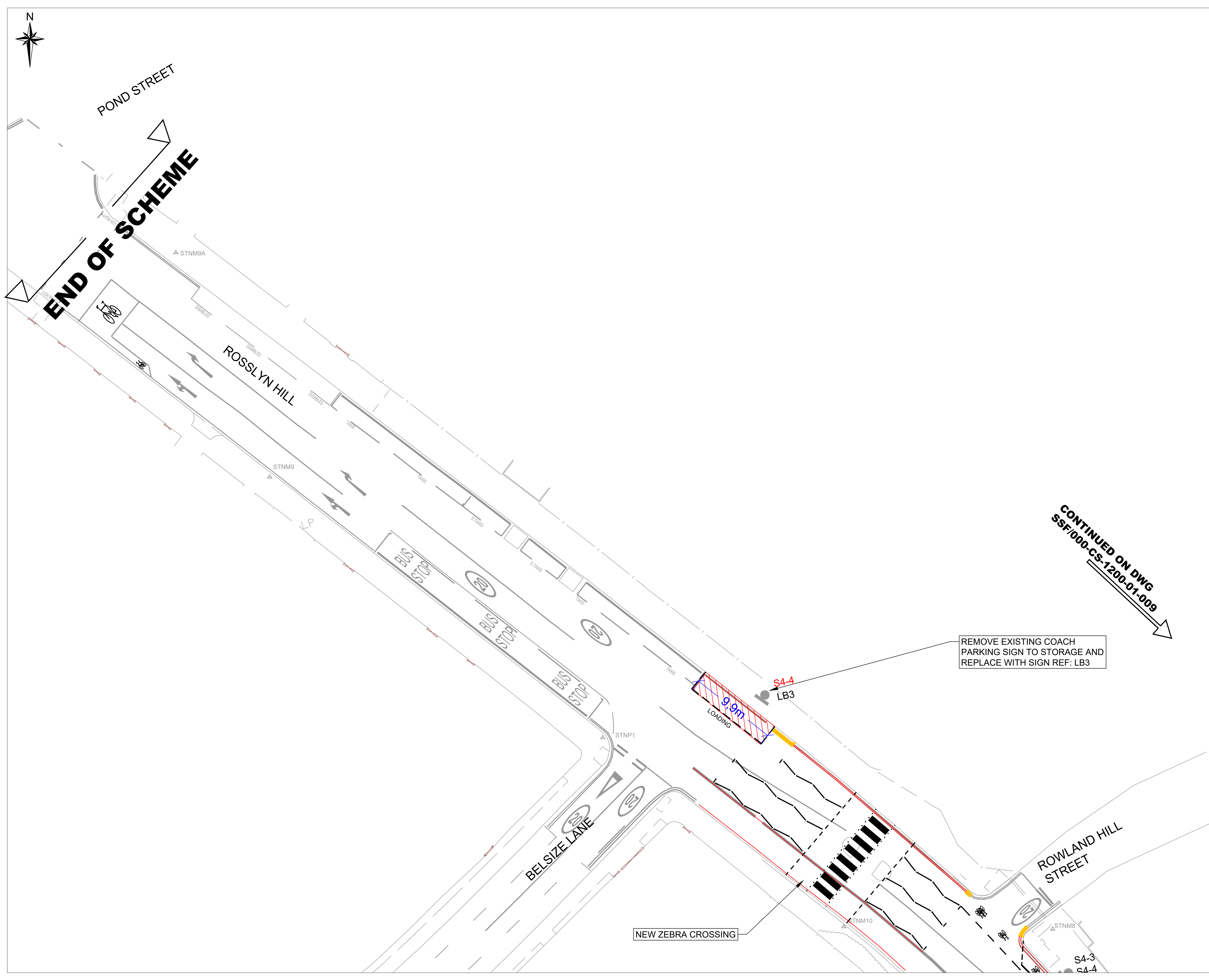
CONTINUED ON DWG
 SSF/000-CS-1200-01-008

REMOVE EXISTING COACH
 PARKING SIGN TO STORAGE AND
 REPLACE WITH SIGN REF: LB3

NEW ZEBRA CROSSING

EXISTING BUS LANE WITH OPERATING
 TIMES MON - FRI 3PM - 7PM TO BE
 CHANGED TO MON - SUN (24 HOURS)

REVIEWED SIGNALLED
 PEDESTRIAN CROSSING



- KEY:**
- Install new post and sign (check signage reference)
 - Install new sign on existing post
 - Install new sign on existing lamp post
 - Remove post to tip and sign to storage
 - Remove sign from existing post to storage
 - Remove sign from existing lamp post to storage
 - New bay or refresh existing bay markings
 - New disabled bay markings
 - New loading bay markings
 - New electric vehicle charging bay markings
 - New car club bay markings
 - Bay markings to be removed
 - New double yellow line markings
 - New yellow line termination markings
 - New single yellow line markings
 - Waiting restriction markings to be removed

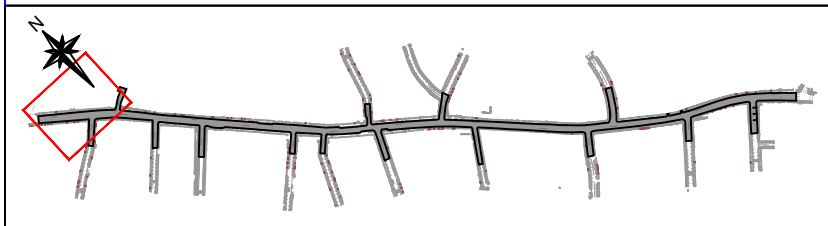
AB331/3

Code	Description
SRP1	Mon-Fri 9am-6.30pm, Sat 9.30am-1.30pm permit holders CA-B or pay by phone 020 3003 2532 quoting location 0000 (Elton Rd), max stay 2 hours
SRP2	Mon-Fri 9am-6.30pm, Sat 9.30am-1.30pm permit holders CA-B or pay by phone 020 3003 2532 quoting location 0000 (England's Lane), max stay 2 hours
SRP3	Mon-Fri 9am-6.30pm, Sat 9.30am-1.30pm permit holders CA-B or pay by phone 020 3003 2532 quoting location 0000 (Belize Gr), max stay 2 hours
SRP4	Mon-Fri 9am-6.30pm, Sat 9.30am-1.30pm permit holders CA-B or pay by phone 020 3003 2532 quoting location 0000 (Howell Rd), max stay 2 hours
PB1	Mon-Fri 9am-6.30pm, Sat 9.30am-1.30pm pay by phone 020 3003 2532 quoting location 0000 (Elton Rd), max stay 2 hours
PB2	Mon-Fri 9am-6.30pm, Sat 9.30am-1.30pm pay by phone 020 3003 2532 quoting location 0000 (Belize's Gr), max stay 2 hours
LB1	Loading only Mon-Fri 9am-6.30pm, Sat 9.30am-1.30pm
LB2	Loading only (24 hours / 7 days per week)
LB3	Loading only Mon- Sat 10am - 12noon
CC1	Car club permit holders only CC-04 (Parkhill Rd)
CC2	Car club permit holders only CC-111 (Arntim Grv)
CC3	Car club permit holders only CC-16 (Downside Cres)
EC	Electric vehicle recharging point only, max stay 3 hours
DB	Disabled badge holders only 3 hours max stay
RB	Residents permit holders only CA-B, Mon-Fri 9am-6.30pm, Sat 9.30am-1.30pm
	New 24/7 mandatory cycle lanes and cycle logos (dia 1057)
S4-0	Remove existing traffic signs regulation and general direction diagram number to storage

- NOTES:**
- ALL ITEMS SHOWN RED ARE TO BE REMOVED, GREY ARE TO BE MAINTAINED AND BLACK ARE TO BE INSTALLED AS PART OF WORK
 - THIS DRAWING IS BASED ON CD SURVEYS LTD TOPOGRAPHICAL SURVEY DRAWING NO. 2008046 - HAVERSTOCK HILL, LONDON FINAL
 - THIS AND ALL DRAWINGS ARE TO BE READ IN CONJUNCTION WITH THE SPECIFICATION FOR HIGHWAY WORKS AND OTHER SCHEME DRAWINGS
 - IF IN DOUBT OF ANY ASPECT OF THE DESIGN REFER TO THE LEAD DESIGNER FOR CLARIFICATION
 - EXISTING ACCESSES SHOULD BE MAINTAINED AT ALL TIMES AND NOT OBSTRUCTED UNLESS WITH PRIOR CONSENT FROM AFFECTED PARTIES
 - A MINIMUM FOOTWAY WIDTH OF 1.5M (OR AN ABSOLUTE MINIMUM OF 1M, OVER A MAXIMUM LENGTH OF 6M) SHOULD BE MAINTAINED DURING SITE CLEARANCE
 - ALL EXISTING LIGHTING COLUMNS, ILLUMINATED BOLLARDS OR ROAD SIGNS ARE TO BE DISCONNECTED AND MADE SAFE BEFORE REMOVALS
 - CONTRACTOR TO ENSURE TREE ROOTS ARE PROTECTED DURING EXCAVATION WORKS AROUND TREES.
 - WAND ORCAS ARE TO BE POSITIONED ON THE INSIDE OF MANDATORY CYCLE LANE MARKINGS
 - MANDATORY CYCLE LANE DIMENSIONS ARE FROM THE KERB FACE TO THE OUTSIDE OF THE MANDATORY WHITE LINE MARKINGS

Rev	By	Date	Amendments

Camden
 Design Team
 Transport Strategy Service
 London Borough of Camden
 5 Pancras Square
 Tel 020 7974 5551, Fax 020 7974 6952
 DX 2106 Euston, Minicom 020 7974 6866



Project
**CYCLE POP-UP SCHEME
 HAVERSTOCK HILL**

Drawing Title
**REVISED PARKING SIGNAGE AND BAYS
 DETAILS**

Scale 1 : 200 @ A1	Date OCT 2020
Drawn By WH	File Ref
Checked By SS	Dwg Name CYCLE POP-UP
Drawing Location P:ATE****	Drawing Number
Drawing Number SSF/000-CS-1200-01-010	Rev. -

CONTINUED ON DWG
 SSF/000-CS-1200-01-009

The Camden (Haverstock Hill / Rossllyn Hill and Neighbouring Streets) Experimental Traffic Order 2020

2020 No. 93

LONDON BOROUGH OF CAMDEN

TRAFFIC MANAGEMENT ORDER

2020 No. 93

The Camden (Haverstock Hill / Rossllyn Hill and Neighbouring Streets) Experimental Traffic Order 2020

Made on 23 November 2020

Coming into force on 3 December 2020

The Council of the London Borough of Camden, after consulting the Commissioner of Police of the Metropolis, in exercise of the powers conferred by sections 45, 46, 49 and 124 of and part IV of schedule 9 to the Road Traffic Regulation Act 1984 [1984 c. 27], as amended by section 8 of and part I of schedule 5 to the Local Government Act 1985 [1985 c. 51], and of all other powers thereunto enabling, hereby make the following order:

1. Citation and commencement

- 1.1 This Order shall come into force on 3 December 2020 and may be cited as The Camden (Haverstock Hill / Rossllyn Hill and Neighbouring Streets) Experimental Traffic Order 2020.

2. Interpretation

- 2.1 In this order, the following terms have the meanings respectively assigned to them:

“CA-B order” means the Camden (Parking Places) (CA-B) Traffic Order 2012 [L.B.C. 2012 No. 2];

“Car Club order” means the Camden (Parking Places) (Car Clubs) Traffic Order 2012 [L.B.C 2012 No. 26];

“Disabled Persons’ order” means the Camden (Free Parking Places) (Disabled Persons) Traffic Order 2012; [L.B.C. 2012 No. 22];

“EVCP order” means the Camden (Parking Places) (Charging Points for Electric Vehicles) Traffic Order 2020; [L.B.C. 2012 No. 28];

“Loading Places order” means the Camden (Loading Places) Traffic Order 2020; [L.B.C. 2012 No. 21];

“School Bus order” means the Camden (Free Parking Places) (School Buses) Traffic Order 2012; [L.B.C. 2012 No. 31];

“Waiting and Loading order” means the Camden (Waiting and Loading Restrictions) (Civil Enforcement Area) Traffic Order 2012 [L.B.C. 2012 No. 1];

2.2 Any reference in this order to any other order or enactment shall be construed as a reference to that order or enactment as amended, applied, consolidated, re-enacted by or as having effect by virtue of any subsequent order or enactment.

3. Revocation and designation of parking places

3.1 Nothing in this article shall prejudice the validity of anything done or any liability incurred in respect of any act or omission before the coming into force of this order.

3.2 The CA-B order shall have effect as though;

3.2.1 there was omitted from schedule 1 to that order, the items set out in table 1.1 of Schedule 1 to this order;

3.2.2 there was included in schedule 1 to that order, the items set out in table 1.2 of the schedule to this order;

3.2.3 there was omitted from in schedule 2 to that order, the items set out in table 1.3 of Schedule 1 to this order;

3.2.4 there was included in schedule 2 to that order, the items set out in table 1.4 of the schedule to this order;

3.2.5 there was included in schedule 3 to that order, the items set out in table 1.5 of the schedule to this order.

3.3 The Car Club order shall have effect as though;

3.3.1 there was omitted from the schedule to that order, the items set out in table 2.1 of the schedule to this order;

3.3.2 there was included in the schedule to that order, the items set out in table 2.2 of the schedule to this order.

3.4 The Disabled Persons' order shall have effect as though;

3.4.1 there was omitted from the schedule to that order, the items set out in table 3.1 of the schedule to this order;

3.4.2 there was included in the schedule to that order, the items set out in table 3.2 of the schedule to this order.

3.5 The EVCP order shall have effect as though;

3.5.1 there was omitted from the schedule to that order, the items set out in table 4.1 of the schedule to this order;

3.5.2 there was included in the schedule to that order, the items set out in table 4.2 of the schedule to this order.

3.6 The Loading Places order shall have effect as though;

- 3.6.1 there was omitted from schedule 1 to that order, the items set out in table 5.1 of the schedule to this order;
- 3.6.2 there was included in schedule 1 to that order, the items set out in table 5.2 of the schedule to this order.
- 3.7 The School Bus order shall have effect as though there was omitted from the schedule to that order, the item set out in table 6 of the schedule to this order.
- 3.8 The Waiting and Loading order shall have effect as though;
- 3.8.1 there was substituted for the items set out in relation to the similarly named streets in schedule 1 to that order, the items set out in table 7.1 of the schedule to this order;
- 3.8.2 there was substituted for the items set out in relation to the similarly named streets in schedule 2 to that order, the items set out in table 7.2 of the schedule to this order;
- 3.8.3 there was omitted from schedule 5 to that order, the items set out in table 7.3 of the schedule to this order.
- 3.9 The provisions of the Waiting and Loading order shall not apply in respect of any area of highway which is also designated as a parking place by this order during the controlled hours specified in relation to the parking place.

4. Variation of bus lane controlled hours

- 4.1 The Camden (Bus Lanes) (Consolidation) Traffic Order 2012 [L.B.C. 2012 No. 62] shall have effect as though there was substituted for item 23 in the schedule to that order, the similarly numbered item set out in table 8 of the schedule to this order.

5. Power to modify or suspend provisions of this order

- 5.1 Pursuant to Section 10 (2) of the Act of 1984, the Director of Regeneration & Planning, Supporting Communities Directorate, or any person authorised by him may, if it appears to him or such other authorised person essential in the interest of the expeditious, convenient and safe movement of traffic, or in the provision of suitable and adequate parking, or for preserving or improving the amenities of the area through which any road affected by this order runs, modify or suspend this order or any of the provisions in this order.

Dated this 23 November 2020



Peter Mardell
Head of Parking Operations

SCHEDULE 1

TABLE 1.1 - ITEMS OMITTED FROM SCHEDULE 1 TO THE CA-B ORDER

ITEM NUMBER	STREET	LENGTH OF HIGHWAY	CONTROLLED HOURS
620	ANTRIM GROVE	south-east side: from a point 11 metres south-west of the south-western kerb-line of Haverstock Hill, south-westwards for a distance of 27.0 metre	MONDAY – FRIDAY 9AM - 6.30PM SATURDAY 9.30AM - 1.30PM
622	ANTRIM GROVE	north-west side: from a point 10.9 metres south-west of the south-western kerb-line of Haverstock Hill, south-westwards for a distance of 9.0 metres	MONDAY – FRIDAY 9AM - 6.30PM SATURDAY 9.30AM - 1.30PM
11370	BELSIZE GROVE	south-east side: from a point 11 metres north-east of the party wall of No. 48 Belsize Grove and No. 145 Haverstock Hill, north-eastwards for a distance of 30 metres	MONDAY – FRIDAY 9AM - 6.30PM SATURDAY 9.30AM - 1.30PM
11371	BELSIZE GROVE	north-west side: from a point 6 metres north-east of the south-western boundary of No. 19 Belsize Grove, north-eastwards for a distance of 10 metres	MONDAY – FRIDAY 9AM - 6.30PM SATURDAY 9.30AM - 1.30PM
1293	DOWNSIDE CRESCENT (business)	north-west side: from a point 3.5 metres north-east of the south-western boundary wall of no. 1 Downside: Crescent, south-westwards for a distance of 21 metres	MONDAY – FRIDAY 9AM - 6.30PM SATURDAY 9.30AM - 1.30PM
801	ENGLAND'S LANE	south-east side: from a point 16.5 metres south-west of the south-western kerb-line of Haverstock Hill, south-westwards for a distance of 18.5 metres	MONDAY – FRIDAY 9AM - 6.30PM SATURDAY 9.30AM - 1.30PM
865	ETON ROAD	south-east side: from a point 12 metres south-west of the south-western kerb-line of Haverstock Hill, south-westwards for a distance of 49 metres	MONDAY – FRIDAY 9AM - 6.30PM SATURDAY 9.30AM - 1.30PM
869	ETON ROAD	north-west side: from a point 9.5 metres south-west of the south-western kerb-line of Haverstock Hill, south-westwards for a distance of 25 metres	MONDAY – FRIDAY 9AM - 6.30PM SATURDAY 9.30AM - 1.30PM

10105	GLENLOCH ROAD	north-west side: from a point 24.5 metres south-west of the south-western kerb-line of Haverstock Hill, south-westwards for a distance of 32 metres	MONDAY – FRIDAY 9AM - 6.30PM SATURDAY 9.30AM - 1.30PM
974	HAVERSTOCK HILL	south-west side, from a point 25.5 metres south-east of the south-eastern kerb-line of Antrim Grove, south-eastwards for a distance of 15 metre	MONDAY – FRIDAY 9AM - 6.30PM SATURDAY 9.30AM - 1.30PM
975	HAVERSTOCK HILL	south-west side, from a point 6 metres north-west of a point opposite the north-western boundary wall of no. 132 Haverstock Hill, south-eastwards for a distance of 12 metres	MONDAY – FRIDAY 9AM - 6.30PM SATURDAY 9.30AM - 1.30PM
976	HAVERSTOCK HILL	south-west side, from a point 7 metres south-east of the party wall of nos. 117 and 119 Haverstock Hill, north-westwards for a distance of 20 metres	MONDAY – FRIDAY 9AM - 6.30PM SATURDAY 9.30AM - 1.30PM
977	HAVERSTOCK HILL	south-west side: from a point 35 metres north-west of the north-western kerb-line of England's Lane, north-westwards for a distance of 23 metres	MONDAY – FRIDAY 9AM - 6.30PM SATURDAY 9.30AM - 1.30PM
11026	HAVERSTOCK HILL	south-west side: from a point 9.8 metres south-east of the south eastern kerb line of Antrim Grove, south-eastwards for a distance of 10 metres	MONDAY – FRIDAY 9AM - 6.30PM SATURDAY 9.30AM - 1.30PM
11847	HAVERSTOCK HILL	south-west side, from the party wall of nos. 91 and 93 Haverstock Hill, north-westward for a distance of 25.0 metres	MONDAY – FRIDAY 9AM - 6.30PM SATURDAY 9.30AM - 1.30PM
11848	HAVERSTOCK HILL	north-east side: from a point 15.5 metres south-east of the south-eastern kerb-line of Parkhill Road, south-eastward for a distance of 35.0 metres	MONDAY – FRIDAY 9AM - 6.30PM SATURDAY 9.30AM - 1.30PM
12497	HAVERSTOCK HILL	south-west side: from a point 18 metres north-west of the south-eastern property boundary of no. 61 Haverstock Hill, north-westwards for a distance of 28.2 metres	MONDAY – FRIDAY 9AM - 6.30PM SATURDAY 9.30AM - 1.30PM
13029	HOWITT ROAD	north-west side: from a point 14 metres south-west of the south-western kerb-line of Haverstock Hill, south-westwards for a distance of 12.4 metres	MONDAY – FRIDAY 9AM - 6.30PM SATURDAY 9.30AM - 1.30PM
11850	PARKHILL ROAD	south-east side: from a point 10.9 metres north-east of the north-eastern kerb-line of Haverstock Hill, north-eastwards for a distance of 45.0 metres	MONDAY – FRIDAY 9AM - 6.30PM SATURDAY 9.30AM - 1.30PM

1273	STEELE'S ROAD	north-west side: from a point 14.5 metres south-west of the south-western kerb-line of Haverstock Hill, south-westwards for a distance of 20 metres	MONDAY – FRIDAY 9AM - 6.30PM SATURDAY 9.30AM - 1.30PM
------	---------------	---	--

TABLE 1.2 – ITEMS INCLUDED IN SCHEDULE 1 TO THE CA-B ORDER

ITEM NUMBER	STREET	LENGTH OF HIGHWAY	CONTROLLED HOURS
13705	ANTRIM GROVE	north-west side: from a point 15.2 metres south-west of the north-western kerb-line of Haverstock Hill, south-westwards for a distance of 4.7 metres	MONDAY – FRIDAY 9AM - 6.30PM SATURDAY 9.30AM - 1.30PM
13706	ANTRIM GROVE	south-east side: from a point 11 metres south-west of the south-western kerb-line of Haverstock Hill, south-westwards for a distance of 32 metres	MONDAY – FRIDAY 9AM - 6.30PM SATURDAY 9.30AM - 1.30PM
13707	ETON ROAD	south-east side: from a point 32 metres south-west of the south-western kerb-line of Haverstock Hill, south-westwards for a distance of 29 metres	MONDAY – FRIDAY 9AM - 6.30PM SATURDAY 9.30AM - 1.30PM
13708	GLENLOCH ROAD	north-west side: from a point 33.1 metres south-west of the north-western kerb-line of Haverstock Hill, south-westwards for a distance of 25.4 metres	MONDAY – FRIDAY 9AM - 6.30PM SATURDAY 9.30AM - 1.30PM
13709	PARKHILL ROAD	south-east side: from a point 21.3 metres north-east of the south-eastern kerb-line of Haverstock Hill, north-eastwards for a distance of 35 metres	MONDAY – FRIDAY 9AM - 6.30PM SATURDAY 9.30AM - 1.30PM

TABLE 1.3 – ITEMS OMITTED FROM SCHEDULE 2 TO THE CA-B ORDER

ITEM NUMBER	STREET	LENGTH OF HIGHWAY	CONTROLLED HOURS	TARIFF (NON-DIESEL ENGINED)	TARIFF (DIESEL ENGINED)	MAXIMUM STAY
218	HAVERSTOCK HILL	north-east side: from a point 9 metres south-east of the kerb-line of south-east Upper Park Road, south-eastwards for a distance of 10 metres	MONDAY – FRIDAY 9AM - 6.30PM SATURDAY 9.30AM - 1.30PM	£3.43 per hour	£4.17 per hour	2 hours
1308	HAVERSTOCK HILL	north-east side: from the north-western boundary wall of no. 200 Haverstock Hill, south-eastwards for a distance of 35 metres	MONDAY – FRIDAY 9AM - 6.30PM SATURDAY 9.30AM - 1.30PM	£3.43 per hour	£4.17 per hour	2 hours
1309	HAVERSTOCK HILL	south-west side: from a point 5 metres south-east of a point opposite the north-western boundary wall of no. 193 Haverstock Hill, north-westwards for a distance of 28 metres	MONDAY – FRIDAY 9AM - 6.30PM SATURDAY 9.30AM - 1.30PM	£3.43 per hour	£4.17 per hour	2 hours
1310	HAVERSTOCK HILL	north-east side: from a point 3.5 metres north-west of the party wall of nos. 212 and 214 Haverstock Hill, south-eastwards for a distance of 11 metres	MONDAY – FRIDAY 9AM - 6.30PM SATURDAY 9.30AM - 1.30PM	£3.43 per hour	£4.17 per hour	2 hours
9203	HAVERSTOCK HILL	north-east side: from the party wall of nos. 180 and 182 Haverstock Hill, north-westwards for a distance of 18 metres	MONDAY – FRIDAY 9AM - 6.30PM SATURDAY 9.30AM - 1.30PM	£3.43 per hour	£4.17 per hour	2 hours
11805	HAVERSTOCK HILL	south-west side: from a point 9.1 metres south-east of a point in line with the south-eastern kerb line of Howitt Road, south-eastward for a distance of 30 metres	MONDAY – FRIDAY 9AM - 6.30PM SATURDAY 9.30AM - 1.30PM	£3.43 per hour	£4.17 per hour	2 hours
12496	HAVERSTOCK HILL	north-east side: from the party wall of nos. 92 and 94 Haverstock Hill, south-eastwards for a distance of 32.1 metres	MONDAY – FRIDAY 9AM - 6.30PM SATURDAY 9.30AM - 1.30PM	£3.43 per hour	£4.17 per hour	2 hours
13424	HAVERSTOCK HILL	south-west side: from a point 20.4 metres north-west of the common boundary of nos. 141 and 143 Haverstock Hill, north-westwards for a distance of 9.5 metres	MONDAY – FRIDAY 9AM - 6.30PM SATURDAY 9.30AM - 1.30PM	£3.43 per hour	£4.17 per hour	2 hours

220	UPPER PARK ROAD	south-east side: from a point 1 metre north-east of the south-western boundary wall of no. 2 Upper Park Road, south-westwards for a distance of 16 metres	MONDAY – FRIDAY 9AM - 6.30PM SATURDAY 9.30AM - 1.30PM	£3.43 per hour	£4.17 per hour	2 hours
-----	-----------------	---	---	----------------	----------------	---------

TABLE 1.4 – ITEMS INCLUDED IN SCHEDULE 2 TO THE CA-B ORDER

ITEM NUMBER	STREET	LENGTH OF HIGHWAY	CONTROLLED HOURS	TARIFF (NON-DIESEL ENGINED)	TARIFF (DIESEL ENGINED)	MAXIMUM STAY
13710	ETON ROAD	south-east side: from a point 12 metres south-west of the south-western kerb-line of Haverstock Hill, south-westwards for a distance of 10 metres	MONDAY – FRIDAY 9AM - 6.30PM SATURDAY 9.30AM - 1.30PM	£3.43 per hour	£4.17 per hour	2 hours
13711	STEELE'S ROAD	north-west side: from a point 18.3 metres south-west of the north-western kerb- line of Haverstock Hill, south-westwards for a distance of 8.6 metres	MONDAY – FRIDAY 9AM - 6.30PM SATURDAY 9.30AM - 1.30PM	£3.43 per hour	£4.17 per hour	2 hours
13712	UPPER PARK ROAD	south-east side: from a point 11.6 metres north-east of the south-eastern kerb line of Haverstock Hill, north-eastwards for a distance of 14.2 metres	MONDAY – FRIDAY 9AM - 6.30PM SATURDAY 9.30AM - 1.30PM	£3.43 per hour	£4.17 per hour	2 hours

TABLE 1.5 – ITEMS INCLUDED IN SCHEDULE 3 TO THE CA-B ORDER

ITEM NUMBER	STREET	LENGTH OF HIGHWAY	CONTROLLED HOURS	TARIFF (NON-DIESEL ENGINED)	TARIFF (DIESEL ENGINED)	MAXIMUM STAY
13713	BELSIZE GROVE	south-east side: from a point 11 metres north-east of the party wall of No. 48 Belsize Grove and No. 145 Haverstock Hill, north-eastwards for a distance of 16.8 metres	MONDAY – FRIDAY 9AM - 6.30PM SATURDAY 9.30AM - 1.30PM	£3.43 per hour	£4.17 per hour	2 hours

13714	ENGLAND'S LANE	south-east side: from a point 12.4 metres south-west of the south-western kerb- line of Haverstock Hill, south-westwards for a distance of 21.2 metres	MONDAY – FRIDAY 9AM - 6.30PM SATURDAY 9.30AM - 1.30PM	£3.43 per hour	£4.17 per hour	2 hours
13715	ETON ROAD	south-east side: from a point 22 metres south-west of the south-western kerb-line of Haverstock Hill, south-westwards for a distance of 10 metres	MONDAY – FRIDAY 9AM - 6.30PM SATURDAY 9.30AM - 1.30PM	£3.43 per hour	£4.17 per hour	2 hours
13716	ETON ROAD	north-west side: from a point 16.7 metres south-west of the north-western kerb- line of Haverstock Hill, south-westwards for a distance of 18 metres	MONDAY – FRIDAY 9AM - 6.30PM SATURDAY 9.30AM - 1.30PM	£3.43 per hour	£4.17 per hour	2 hours
13717	HOWITT ROAD	north-west side: from a point 14.5 metres south-west of the north-western kerb-line of Haverstock Hill, south-westwards for a distance of 11.7 metres	MONDAY – FRIDAY 9AM - 6.30PM SATURDAY 9.30AM - 1.30PM	£3.43 per hour	£4.17 per hour	2 hours

TABLE 2.1 – ITEMS OMITTED FROM THE SCHEDULE TO THE CAR CLUB ORDER

ITEM NUMBER	STREET	LENGTH OF HIGHWAY	DESIGNATION NUMBER
10104	GLENLOCH ROAD	north-west side: from the north-eastern flank wall of no. 185 Haverstock Hill, south westward for a distance of 10.2 metres	CC-16
11784	HAVERSTOCK HILL	south-west side from a point 4.1 metres south-east of a point in line with the south eastern kerb line of Howitt Road, south eastward for a distance of 5.0 metres	CC-111
12498	HAVERSTOCK HILL	south-west side: from a point 46.2 metres north-west of the south-eastern property boundary of no. 61 Haverstock Hill, north-westwards for a distance of 12 metres	CC-04

TABLE 2.2 – ITEMS INCLUDED IN THE SCHEDULE TO THE CAR CLUB ORDER

ITEM NUMBER	STREET	LENGTH OF HIGHWAY	DESIGNATION NUMBER
13718	ANTRIM GROVE	north-west side: from a point 10.5 metres south-west of the north-western kerb- line of Haverstock Hill, south-westwards for a distance of 4.7 metres	CC-111
13719	DOWNSIDE CRESCENT	north-west side: from a point 27.7 metres north-east of the north-eastern kerb line of Haverstock Hill, north-eastwards for a distance of 10 metres	CC-16
13720	PARKHILL ROAD	south-east side: from a point 11.3 metres north-east of the south-eastern kerb-line of Haverstock Hill, north-eastwards for a distance of 10 metres	CC-04

TABLE 3.1 – ITEM OMITTED FROM THE SCHEDULE TO THE DISABLED PERSONS' ORDER

ITEM NUMBER	STREET	LENGTH OF HIGHWAY	MAXIMUM STAY
11385	BELSIZE GROVE	north-west side, from the south-western boundary of No. 19 Belsize Grove, north-eastwards for a distance of 6 metres	NONE
11386	BELSIZE GROVE	north-west side, from a point 16 metres north-east of the south-western boundary of No. 19 Belsize Grove, north-eastwards for a distance of 6 metres	NONE
7073	HAVERSTOCK HILL	south-west side, from a point 15 metres north-west of a point opposite the party wall of nos. 197 and 199 Haverstock Hill, north-westwards for a distance of 17.5 metres	NONE
8658	HAVERSTOCK HILL	south-west side: from a point 25.0 metres north-west of the north-western kerb line of Belsize Grove north-westward for a distance of 6 metres	NONE

9186	HAVERSTOCK HILL	south-west side: from a point 32.0 metres north-west of the north-western kerb line of Belsize Grove north-westward for a distance of 5.5 metres	NONE
------	-----------------	--	------

TABLE 3.2 – ITEMS INCLUDED IN THE SCHEDULE TO THE DISABLED PERSONS’ ORDER

ITEM NUMBER	STREET	LENGTH OF HIGHWAY	MAXIMUM STAY
13721	ETON ROAD	north-west side: from a point 10.1 metres south-west of the north-western kerb- line of Haverstock Hill, south-westwards for a distance of 6.6 metres	3 HOURS
13722	BELSIZE GROVE	south-east side: from a point 27.8 metres north-east of the party wall of No. 48 Belsize Grove and No. 145 Haverstock Hill, north-eastwards for a distance of 13.2 metres	3 HOURS
13723	BELSIZE GROVE	north-west side: from the south-western boundary of No. 19 Belsize Grove, north-eastwards for a distance of 13.2 metres	3 HOURS
13724	GLENLOCH ROAD	north-west side: from a point 17.9 metres south-west of the north-western kerb-line of Haverstock Hill, south-westwards for a distance of 13.2 metres	3 HOURS
13725	HAVERSTOCK HILL	south-west side: from a point 13 metres south-east of the south-western kerb line of Belsize Avenue south-eastward for a distance of 6.6 metres	3 HOURS

TABLE 4.1 – ITEMS OMITTED FROM THE SCHEDULE TO THE EVCP ORDER

ITEM NUMBER	STREET	LENGTH OF HIGHWAY
12165	HAYERSTOCK HILL	south-west side from a point 9.9 metres north-west of the common boundary wall of nos.141 and 143 Haverstock Hill, north westward for a distance of 5.0 metres
13460	HAYERSTOCK HILL	south-west side: from a point 14.9 metres north-west of the common boundary of nos.141 and 143 Haverstock Hill, north westwards for a distance of 5.5 metres

TABLE 4.2 – ITEMS INCLUDED IN THE SCHEDULE TO THE EVCP ORDER

ITEM NUMBER	STREET	LENGTH OF HIGHWAY
13726	DOWNSIDE CRESCENT	north-west side: from a point 27.7 metres north-east of the north-eastern kerb line of Haverstock Hill, north-eastwards for a distance of 10 metres

TABLE 5.1 – ITEMS OMITTED FROM SCHEDULE 1 TO THE LOADING PLACES ORDER

ITEM NUMBER	STREET	LENGTH OF HIGHWAY	CONTROLLED HOURS
7651	HAYERSTOCK HILL	north-east side, from a point 0.5 metres south-east of the south-eastern boundary wall of no. 208 Haverstock Hill, north-westwards for a distance of 9.5 metres	MONDAY – FRIDAY 9AM - 6.30PM SATURDAY 9.30AM - 1.30PM

TABLE 5.2 – ITEMS INCLUDED IN SCHEDULE 1 TO THE LOADING PLACES ORDER

ITEM NUMBER	STREET	LENGTH OF HIGHWAY	CONTROLLED HOURS
13727	BELSIZE GROVE	north-west side: from a point 13.2 metres north-east of the south-western boundary of No. 19 Belsize Grove, north-eastwards for a distance of 10 metres	MONDAY – FRIDAY 9AM - 6.30PM SATURDAY 9.30AM - 1.30PM
13728	HAVERSTOCK HILL	north-east side: from a point 5.2 metres north-west of the party wall of nos. 92 and 94 Haverstock Hill, north-westwards for a distance of 10 metres	AT ALL TIMES
13729	HAVERSTOCK HILL	north-east side: from a point 25 metres south-east of the north-western boundary wall of no. 200 Haverstock Hill, south-eastwards for a distance of 10 metres	AT ALL TIMES
13730	HAVERSTOCK HILL	south-west side: from a point 19.6 metres south-east of the south-western kerb line of Belsize Avenue south-eastward for a distance of 6 metres	AT ALL TIMES
13731	STEELE'S ROAD	north-west side: from a point 8.3 metres south-west of the north-western kerb- line of Haverstock Hill, south-westwards for a distance of 10 metres	MONDAY – FRIDAY 9AM - 6.30PM SATURDAY 9.30AM - 1.30PM

TABLE 6 – ITEM OMITTED FROM THE SCHOOL BUS ORDER

ITEM NUMBER	STREET	LENGTH OF HIGHWAY	CONTROLLED HOURS	MAXIMUM STAY / NO RETURN PERIOD
12072	HAVERSTOCK HILL / ROSSLYN HILL	north east side: from a point 1.9 metres south-east of a point opposite the north-western kerb line of Belsize Lane, for a distance of 10.0 metres in a south-easterly direction	MONDAY - FRIDAY 8AM – 9AM 3PM – 5PM	MAXIMUM STAY 30 MINUTES, NO RETURN WITHIN 30 MINUTES

TABLE 7.1 - ITEMS SUBSTITUTED FOR ITEMS SET OUT IN RELATION TO THE SIMILARLY NAMED STREETS IN SCHEDULE 1 TO THE WAITING AND LOADING ORDER

ITEM NUMBER	STREET – SIDE OF STREET – LENGTH OF HIGHWAY	RESTRICTED HOURS See Schedule 3
449	HAVERSTOCK HILL	
(a)	both sides: from a point 15 metres south of the junction with Prince of Wales Road to the junction with Belsize Lane	A
(b)	north-east side: from the junction with Prince of Wales Road to the junction with Crogslan Road	A
(c)	south-west side:	
(i)	between its junction with Chalk Farm Road and a point 80 metres north-west of the party wall of nos. 5-17 Haverstock Hill	A
(ii)	between a point 80 metres north-west of the party wall of nos. 5-17 Haverstock Hill to a point 15 metres south of a point opposite the southern kerb line of Prince of Wales Road	2L
821	ROSSLYN HILL	A
(a)	north-east side: from its junction with Hampstead High Street to the junction with Belsize Lane	A
(b)	south-west side:	
(i)	from its junction with Hampstead High Street to the north-western kerb line of Lyndhurst Road	A
(ii)	from the south-eastern kerb line of Lyndhurst Road to the junction with Haverstock Hill	2T

TABLE 7.2 - ITEMS SUBSTITUTED FOR ITEMS SET OUT IN RELATION TO THE SIMILARLY NAMED STREETS IN SCHEDULE 2 TO THE WAITING AND LOADING ORDER

ITEM NUMBER	STREET – SIDE OF STREET – LENGTH OF HIGHWAY	RESTRICTED HOURS See Schedule 3
97	HAVERSTOCK HILL	
(a)	north-west side:	
(i)	between its junction with Crogslad Road and a point 29.5 metres south-east of the south-eastern boundary of no. 50 Haverstock Hill	1
(b)	south-west side:	
(i)	between its junction with Chalk Farm Road and a point level with the north-western wall of Chalk Farm Station	1
(ii)	between the north-western wall of Chalk Farm Station and a point 15 metres south of a point opposite the southern kerb line of Prince of Wales Road	25
(c)	both sides: from a point 15 metres south of the southern kerb line of Prince of Wales Road to the junction with Belsize Lane	1
182	ROSSLYN HILL	
(a)	from the junction with Belsize Lane to the southern kerblines of Pond Street / Lyndhurst Road	1
(b)	from the southern kerb lines of Pond Street / Lyndhurst Road to the junction with Hampstead High Street	37

TABLE 7.3 – ITEMS OMITTED FROM SCHEDULE 5 TO THE WAITING AND LOADING ORDER

ITEM NUMBER	STREET	LENGTH OF HIGHWAY
12840	HAVERSTOCK HILL	north-east side: from the party wall of no. 92 Haverstock Hill, and the Load of Hay P.H., north-westwards for a distance of 5.2 metres

TABLE 8 – ITEM SUBSTITUTED FOR THE SIMILARLY NUMBERED ITEM IN THE CAMDEN (BUS LANES) (CONSOLIDATION) TRAFFIC ORDER 2012

ITEM NO.	NAME OF STREET(S) AND LENGTH OF CARRIAGEWAY	TIMES OF OPERATION	DIRECTION OF TRAVEL	PERMITTED VEHICLES
23	HAVERSTOCK HILL south-west side; from a point 20 metres north-west of the north-western kerb line of Belsize Avenue to a point 3 metres south-east of the south-eastern kerb line of Belsize Lane	at any time	north-westbound (with-flow lane)	bus; dial-a-ride; taxi; pedal cycle