

The Camden (Waiting and Loading Restrictions) (Civil Enforcement Area) (Amendment No. 93) Traffic Order 2018

The Camden (Parking Places) (CA-J) (Amendment No. 9) Traffic Order 2018

The Camden (Parking Places) (CA-P) (Amendment No. 19) Traffic Order 2018

The Camden (Parking Places) (CA-R) (Amendment No. 17) Traffic Order 2018

The Camden (Parking Places) (CA-S) (Amendment No. 6) Traffic Order 2018

The Camden (Prohibition of Stopping Outside Schools) (Revocation No. 1) Traffic Order 2018

Notice is hereby given that the Council of the London Borough of Camden proposes to make the above Orders under Sections 6, 45, 45, 49 and 124 and Part IV of Schedule 9 to the Road Traffic Regulation Act 1984, as amended. The general nature and effect of the orders are set out below.

Ferncroft Avenue, NW3 – Revocation of residents permit parking place (one space) outside no. 36 Ferncroft Avenue and implementation of 24-hour waiting restriction in its place (with footway build-out). Removal of school keep-clear markings opposite no. 36 Ferncroft Avenue. Implementation of 24-hour waiting and loading restrictions on both sides of Kidderpore Avenue at its junction with Ferncroft Avenue south-westwards to points abutting the first parking places reached (approximately 10 metres from the junction). Implementation of 24-hour waiting and loading restrictions in Ferncroft Avenue north-westwards from the junction with Kidderpore Avenue to a point abutting the first parking place reached (approximately 10 metres) and south-westwards from the same junction for a distance of approximately 25 metres.

Fitzjohn's Avenue, NW3 – designation of 24-hour loading ban from the junction with Perrins Walk southwards for a distance of 19 metres (west side of the road only). This measure is to protect the approach to a bus stop to be formally marked out immediately north of the junction with Perrin's Walk.

Goldhurst Terrace, NW6 – extension of 24-hour waiting restrictions to protect extended build-outs and crossing points at the junctions with Broadhurst Gardens and Greencroft Gardens and corresponding reduction in lengths of parking places.

King Henry's Road, NW1 – removal of 24.8 metres of residents permit holders parking space from outside no. 13 to no. 19 King Henry's Road. Designation of no-waiting / no loading controls at any time at the re-aligned junction of the main arm of King Henry's Road with the south-western arm of King Henry's Road (both sides of the road).

Menelik Road, NW2 – removal of the westernmost 7.4 metre segment of the residents parking place outside no. 17 Menelik Road and designation of 24-hour waiting controls in place to facilitate a vehicular crossover.

Copies of the proposed orders and the Council's Statement of Reasons for proposing to make the orders may be inspected / obtained by contacting traffic.orders@camden.gov.uk or at the council's offices at 5 Pancras Square, N1C 4AG. Any person wishing to object or make representations in respect of the proposed orders, should send comments in writing, giving reasons for any objection to TransportConsultations@camden.gov.uk or by post to the Director of Regeneration & Planning, Supporting Communities Directorate, Camden Town Hall, Judd Street, London WC1H 9JE, to be received by the end of **3 January 2019**.

Peter Mardell - Head of Parking Operations
6 December 2018

The Camden (Waiting and Loading Restrictions) (Civil Enforcement Area) (Amendment No. 93) Traffic Order 2018

The Camden (Parking Places) (CA-J) (Amendment No. 9) Traffic Order 2018

The Camden (Parking Places) (CA-P) (Amendment No. 19) Traffic Order 2018

The Camden (Parking Places) (CA-R) (Amendment No. 17) Traffic Order 2018

The Camden (Parking Places) (CA-S) (Amendment No. 6) Traffic Order 2018

The Camden (Prohibition of Stopping Outside Schools) (Revocation No. 1) Traffic Order 2018

STATEMENT OF REASONS

Ferncroft Avenue, NW3 – proposals under the waiting and loading amendment order, the CA-S amendment order and the Prohibition of Stopping Outside Schools Revocation order would revoke a single parking space opposite and the school keep-clear restrictions outside St. Margeret’s School. A build-out will be constructed in place of the parking space to provide a safer crossing point for parents and children going to and from the school. Additional waiting and loading restrictions will also be designated in the immediate area to deter vehicles parking in areas where pedestrian sightlines might be compromised.

Fitzjohn’s Avenue, NW3 – proposals under the waiting and loading amendment order would designate a loading ban at the north end of Fitzjohn’s Avenue in order to protect the approach to a new bus stop immediately north of the junction with Perrin’s Walk.

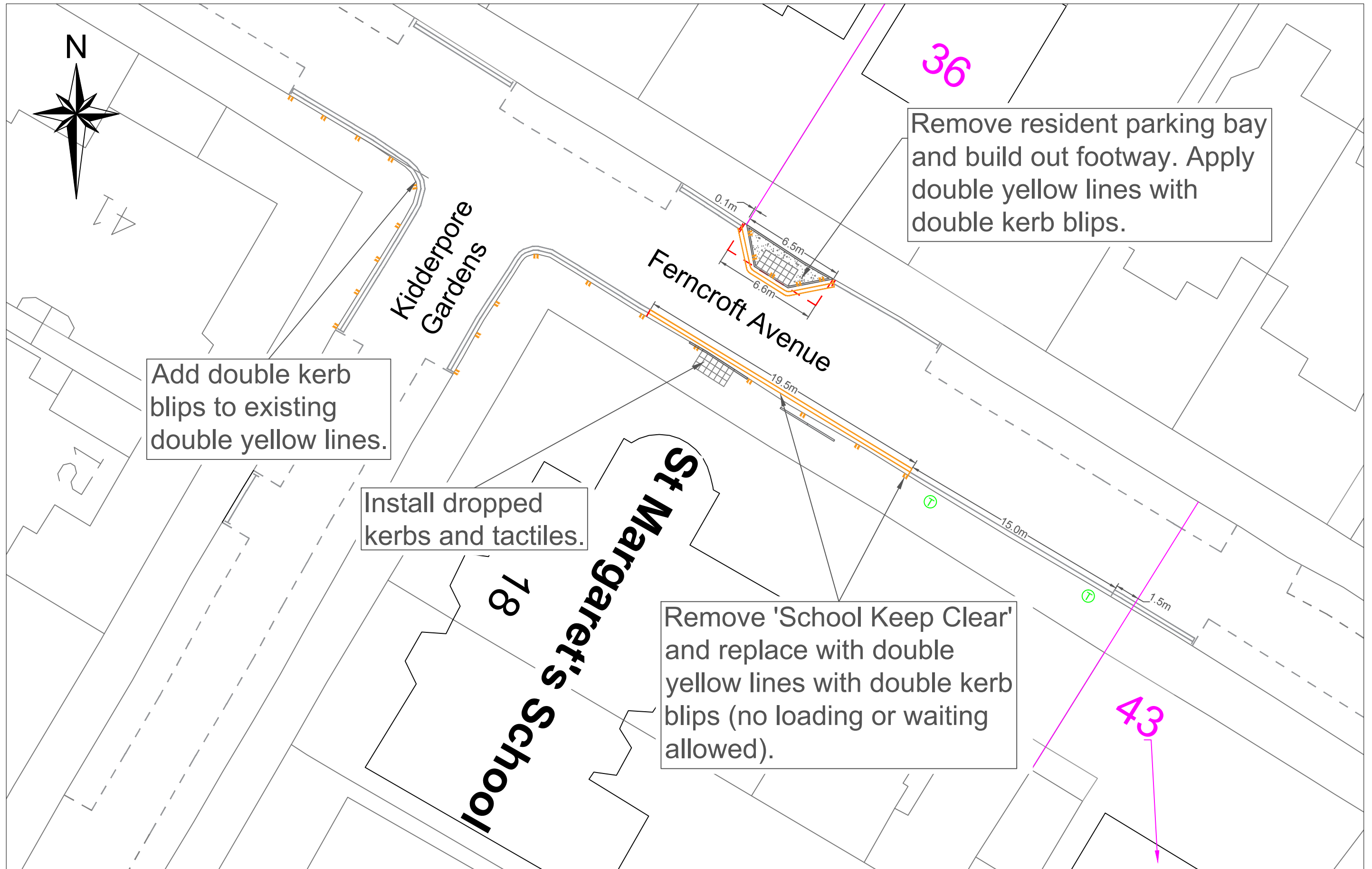
Goldhurst Terrace, NW6 – proposals under the waiting and loading amendment order and the CA-R amendment order would make short extensions to double yellow lines at the junctions with Broadhurst Gardens and Greencroft Gardens due to the extension of pedestrian build-outs at these locations.

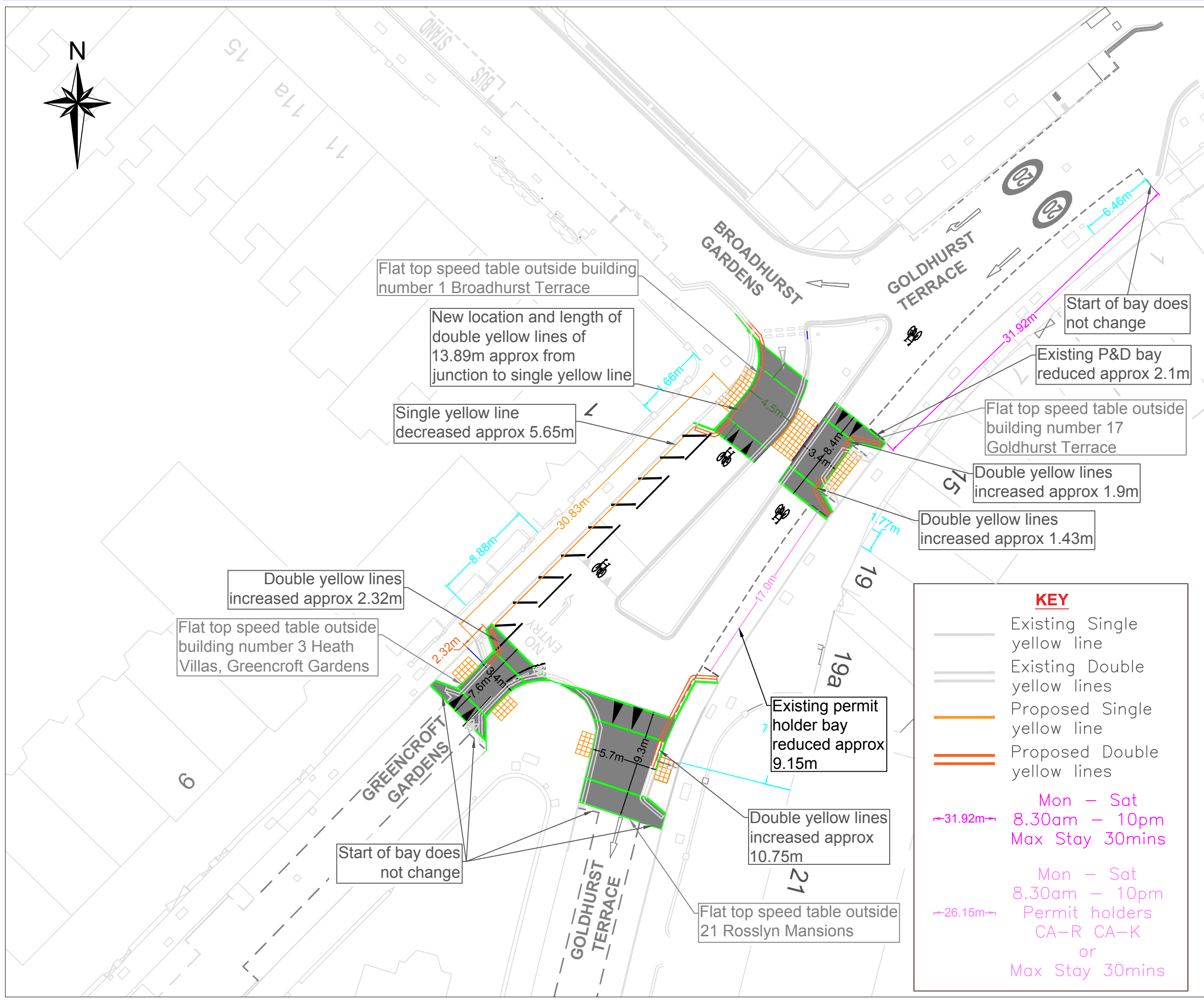
King Henry’s Road, NW3 – proposals under the waiting and loading amendment order and the CA-J amendment order would see the removal of sections of parking places in the vicinity of the junction of the main arm of King Henry’s Road and the section of King Henry’s Road running south-westwards to Ainger Road to facilitate the construction of pedestrian buildouts and re-alignment of the junction for safety reasons. Additional waiting and loading restrictions would be implemented following completion of these measures.

Menelik Road, NW2 – following approval of an application to construct a vehicular crossover, proposals under the waiting and loading amendment order and the CA-P amendment order would remove a section of the parking space outside no. 17 Menelik Road in order to protect the crossover once built.

6 December 2018

Proposed School Safety Improvement





- All dimensions in the black refer to the dark grey proposed speed tables.
 - All dimensions in the cyan are dimensions for TMO positioning.

Flat top speed table outside building number 1 Broadhurst Terrace

New location and length of double yellow lines of 13.89m approx from junction to single yellow line

Single yellow line decreased approx 5.65m

Start of bay does not change

Existing P&D bay reduced approx 2.1m

Flat top speed table outside building number 17 Goldhurst Terrace

Double yellow lines increased approx 1.9m

Double yellow lines increased approx 1.43m

Double yellow lines increased approx 2.32m

Flat top speed table outside building number 3 Heath Villas, Greencroft Gardens

Existing permit holder bay reduced approx 9.15m

Double yellow lines increased approx 10.75m

Flat top speed table outside 21 Rosslyn Mansions

Start of bay does not change

KEY

- Existing Single yellow line
- Existing Double yellow lines
- Proposed Single yellow line
- Proposed Double yellow lines

31.92m → Mon - Sat 8.30am - 10pm Max Stay 30mins

26.15m → Mon - Sat 8.30am - 10pm Permit holders CA-R CA-K or Max Stay 30mins

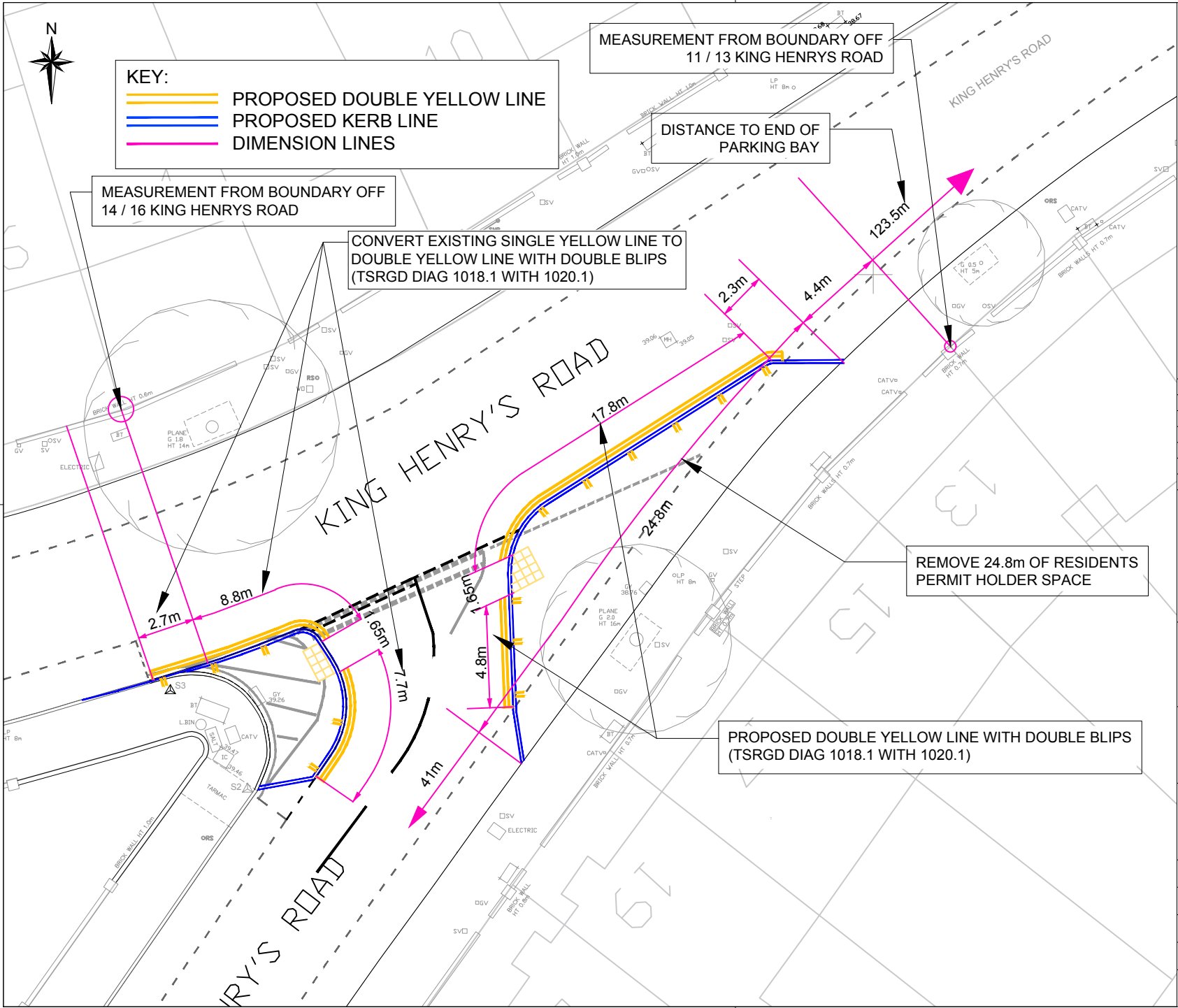
Rev	By	Date	Amendments




Camden
 Design Team
 Transport Strategy Service
 London Borough of Camden
 5 Pancras Square
 Tel 020 7974 5551, Fax 020 7974 6952
 DX 2106 Euston, Minicom 020 7974 6866

Project
 Goldhurst Terrace - NW6

Drawing Title
 Walking Improvements - Detailed Design
 Road Safety Fund - TMO amendments

Scale NTS	Date Oct 2018
Drawn By MW	File Ref T:\Cptl_Schms\2018-19\IC & N\Road Safety Fund\Goldhurst Terrace
Checked By JA	Dwg Name
Drawing Location T:\Cptl_Schms\2018-19\IC & N\Road Safety Fund\Goldhurst Terrace	
Drawing Number Goldhurst Terrace - 005	Rev.



KEY:
 PROPOSED DOUBLE YELLOW LINE
 PROPOSED KERB LINE
 DIMENSION LINES

MEASUREMENT FROM BOUNDARY OFF
14 / 16 KING HENRYS ROAD

CONVERT EXISTING SINGLE YELLOW LINE TO
DOUBLE YELLOW LINE WITH DOUBLE BLIPS
(TSRGD DIAG 1018.1 WITH 1020.1)

MEASUREMENT FROM BOUNDARY OFF
11 / 13 KING HENRYS ROAD

DISTANCE TO END OF
PARKING BAY

REMOVE 24.8m OF RESIDENTS
PERMIT HOLDER SPACE

PROPOSED DOUBLE YELLOW LINE WITH DOUBLE BLIPS
(TSRGD DIAG 1018.1 WITH 1020.1)

A	A.I.	22.11.18	INITIAL ISSUE
Rev	By	Date	Amendments

Camden
 Design Team
 Transport Strategy Service
 London Borough of Camden
 5 Pancras Square
 Tel 020 7974 5551, Fax 020 7974 6952
 DX 2106 Euston, Minicom 020 7974 6866

Project
KING HENRY'S ROAD

Drawing Title
TMO DRAWING

Scale
1 : 250 @ A4

Date
NOV 2018

Drawn By
A.I.

File Ref
-KH-TMO

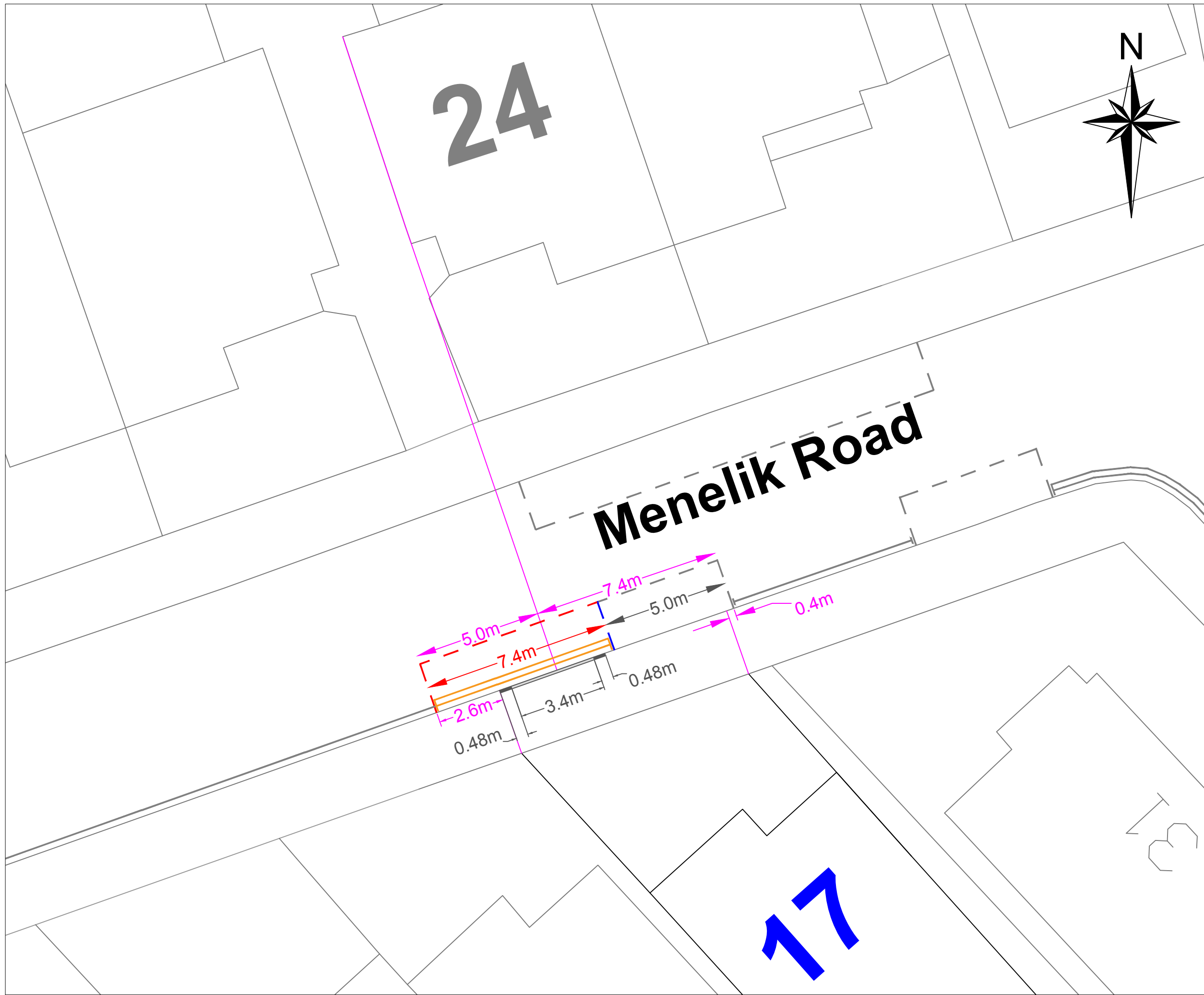
Checked By
R.C.

Dwg Name
-

Drawing Location
 T:\Cptl_Schms\2017-18\CN\King Henrys Road\08 - Drawings\01 - Working Drawings

Drawing Number
KH/DT/TMO/001

Rev.
A



- Existing Parking Space Lining
- Remove Parking Space Lining
- Install Parking Space Lining
- Install Double Yellow Lines
- Existing Single Yellow Line
- Existing double yellow lines
- TMO line
- Proposed crossover with transition kerbs

Rev	By	Date	Amendments

Camden
 Design Team
 Transport Strategy Service
 London Borough of Camden
 5 Pancras Square
 Tel 020 7974 5551, Fax 020 7974 6952
 DX 2106 Euston, Minicom 020 7974 6866

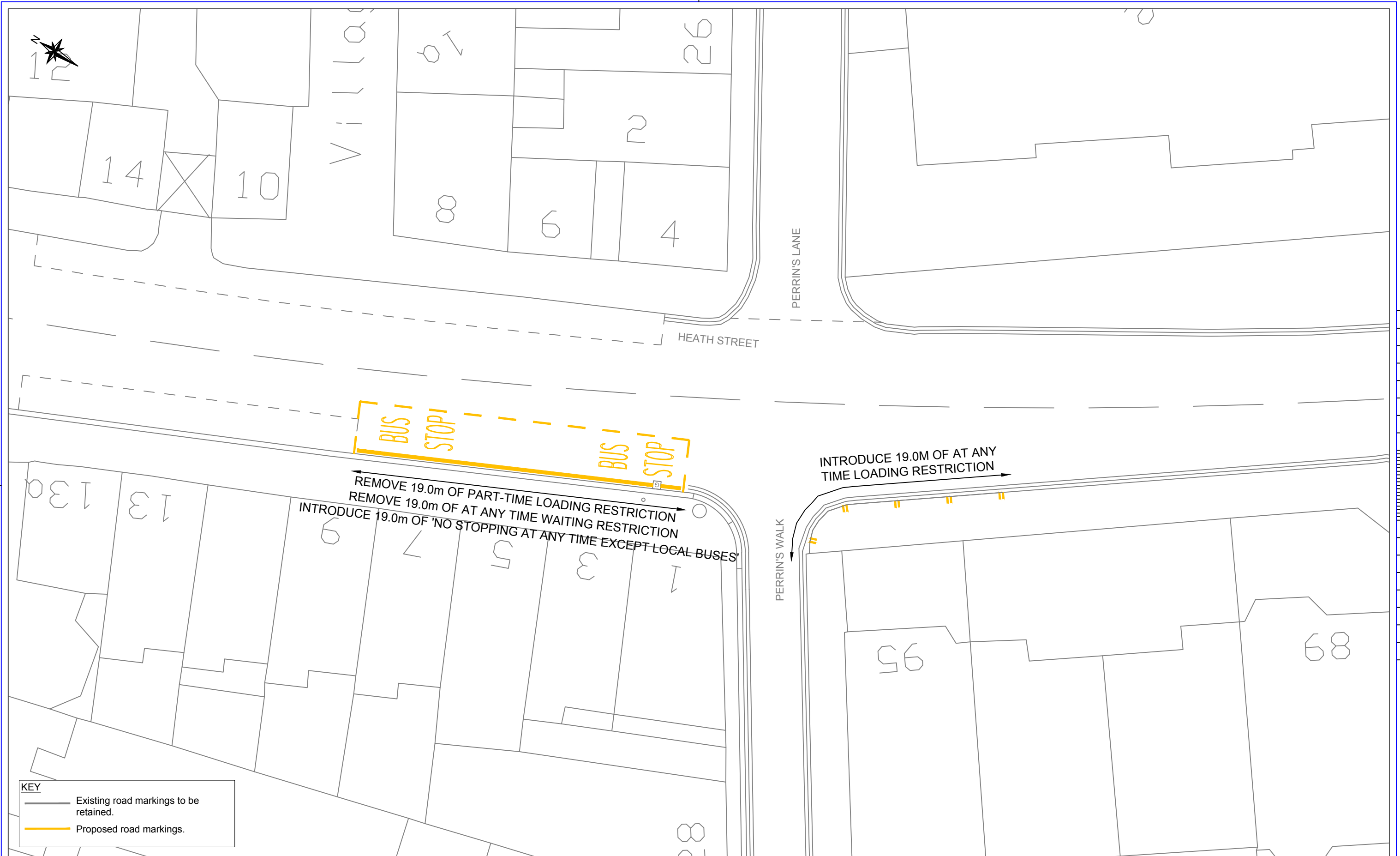
Project **Crossover Request**

Drawing Title **TMO Amendment
17 Menelik Road**

Scale NTS	Date Nov 2018
Drawn By MW	File Ref
Checked By	Dwg Name Menelik Road - Crossover - TMO

Drawing Location
H:\Schemes\17 Menelik Road- Crossover Request\Design Team Drawings\ Working Drawings

Drawing Number	Rev.



1. Do not scale from this drawing. If any errors are identified they are to be brought to the engineer's attention immediately.
2. All dimensions are in metres unless otherwise shown.
3. All works shall be in accordance with the Manual of Contract Documents for Highway Works.
4. All temporary traffic management to be in accordance with 'Safety at Street Works and Road Works: A Code of Practice 2013'
5. This drawing is based on Ordinance Survey data only.

Rev	By	Date	Amendments
A	SGX	20/11/18	Initial submission

The Camden (Waiting and Loading Restrictions) (Civil Enforcement Area) (Amendment No. 92) Traffic Order 2018

2018 No. 72

**FERNCROFT AVENUE
FITZJOHN'S AVENUE
GOLDHURST TERRACE
KIDDERPORE AVENUE
KING HENRY'S ROAD
MENELIK ROAD**

LONDON BOROUGH OF CAMDEN

TRAFFIC MANAGEMENT ORDER

2018 No. 72

The Camden (Waiting and Loading Restrictions) (Civil Enforcement Area)
(Amendment No. 93) Traffic Order 2018

Made on

Coming into force on

The Council of the London Borough of Camden, after consulting the Commissioner of Police of the Metropolis, in exercise of the powers conferred by sections 6 and 124 of and part IV of schedule 9 to the Road Traffic Regulation Act 1984 [1984 c. 27], as amended by section 8 of and part I of schedule 5 to the Local Government Act 1985 [1985 c. 51], and of all other powers thereunto enabling, hereby make the following order:

1. Citation and commencement

- 1.1 This order shall come into force on _____ and may be cited as the Camden (Waiting and Loading Restrictions) (Civil Enforcement Area) (Amendment No. 93) Traffic Order 2018.

2. Interpretation

- 2.1 In this order;
- 2.1.1 the term "parent order" means the Camden (Waiting and Loading Restrictions) (Civil Enforcement Area) Traffic Order 2012 [L.B.C 2012 No. 1];
- 2.1.2 any reference in this order to any enactment shall be construed as a reference to that enactment as amended, applied, consolidated, re-enacted by or as having effect by virtue of any subsequent enactment;
- 2.1.3 unless the context otherwise requires, any expression used in this order which is also used in the parent order shall have the same meaning as in that order.

3. Amendments to schedules 1 and 2 to the parent order

- 3.1 Without prejudice to the validity of anything done or to any liability incurred in respect of any act or omission before the coming into force of this order the parent order shall have effect as though;
- 3.1.1 there was substituted for the items set out in relation to the similarly named street in schedule 1 to the parent order, the items set out in table 1 of the schedule to this order;
- 3.1.2 there was included in schedule 2 to the parent order, the items set out in relation to the streets named in table 2 of the schedule to this order;

Dated this

SCHEDULE

TABLE 1 - ITEMS SUBSTITUTED IN RESPECT OF THE SIMILARLY NAMED STREETS IN SCHEDULE 1 TO THE PARENT ORDER

ITEM NUMBER	STREET – SIDE OF STREET – LENGTH OF HIGHWAY	RESTRICTED HOURS See Schedule
323	FERNCROFT AVENUE	
(a)	south-west side:	
(i)	from a point 8 metres south-east of the eastern kerb line of Platt's Lane to a point 10 metres north-west of the north-western kerb line of Kidderpore Gardens	K
(ii)	from a point 30 metres south-east of the south-eastern kerb line of Kidderpore Gardens to a point 7.2 metres north-west of the north-western flank wall of no.43 Ferncroft Avenue	K
(iii)	from a point 1.1 metres north-west of the north-western flank wall of no.43 Ferncroft Avenue to a point 10 metres north-west of the north-western kerb line of Heath Drive	K
(b)	north-east side:	
(i)	from a point 16 metres south-east of the eastern kerb line of Platt's Lane to a point 12 metres north-west of the western kerb line of Hollycroft Avenue	K
(ii)	from a point 8.5 metres south-east of the eastern kerb line of Hollycroft Avenue to a point 6.0 metres north-west of the north-western boundary wall of no.44 Ferncroft Avenue	K
(iii)	from the north-western boundary wall of no.44 Ferncroft Avenue to a point 10 metres north-west of the north-western kerb line of Heath Drive	K
(c)	both sides: so much else of Ferncroft Avenue that is public highway and is not specified in the lengths above	A

373	GOLDHURST TERRACE	
(a)	north and west side:	
(i)	between a point 9 metres east of the eastern kerb line of Priory Road and a point 9.5 metres west of the western kerb line of Fairhazel Gardens	B
(iii)	between a point 21 metres north-east of the north-eastern kerb line of Fairhazel Gardens and a point 10 metres south-west of the southern side of its junction with Greencroft Gardens	D
(b)	south and east side:	
(i)	between a point 9 metres east of the eastern kerb line of Priory Road and a point 18 metres west of the south-western kerb line of Fairhazel Gardens	B
(ii)	between a point 18 metres north-east of the north-eastern kerb line of Fairhazel Gardens and a point 10 metres south-west of the southern side of its junction with Greencroft Gardens	D
(c)	both sides: so much else of Goldhurst Terrace that is public highway and which does not lie within those lengths specified above	A
405	GREENCROFT GARDENS	
(a)	north and north-west side:	
(i)	between a point 9 metres east of the eastern kerb line of Priory Road and a point 9.5 metres south-west of the south-western kerb line of Fairhazel Gardens	B

(ii)	between a point 4.5 metres north-east of the north-eastern kerb line of Fairhazel Gardens and a point 7.6 metres south-west of a point opposite the southern side of its junction with Goldhurst Terrace	D
(iii)	from a point 13.9 metres south-west of the south-western kerb line of Broadhurst Gardens, south-westwards for a distance of 30.8 metres	D
(b)	south and south-east side:	
(i)	between a point 9 metres east of the eastern kerb line of Priory Road and a point 8.5 metres south-west of the south-western kerb line of Fairhazel Gardens	B
(ii)	between a point 7.5 metres north-east of the north-eastern kerb line build-out of Fairhazel Gardens and a point 7.6 metres south-west of the northern side of its junction with Goldhurst Terrace	D
(c)	both sides: so much else of Greencroft Gardens that is public highway and which does not lie within those lengths specified above	A
635	MENELIK ROAD	
(a)	north and east side: from the eastern kerb line of Westbere Road, eastwards for a distance of 4.8 metres	A
(b)	south and west side:	
(i)	from the eastern kerb line of Westbere Road, eastwards for a distance of 5.4 metres	A
(ii)	from a point 11.0 metres west of the western kerb line of Asmara Road to a point 4.1 metres east of the eastern kerb line of Asmara Road	A
(iii)	from a point 22 metres south-west of the south-western kerb line of Somali Road, south-westwards for a distance of 7.4 metres	A

(iv)	from a point 3.0 metres west of the western kerb line of Somali Road to a point 5.0 metres east of the eastern kerb line of Somali Road	A
(c)	both sides: so much else of Menelik Road that is public highway and which does not lie within those lengths specified above	J
527	KING HENRY'S ROAD	
(a)	main arm (from Gloucester Crescent to Harley Road); south side	
(i)	between the south-western kerb line of Primrose Hill Road and a point 8.0 metres west of that kerb line	A
(ii)	between a point 40.0 metres east of a point opposite the eastern kerb line of Elsworthy Rise and a point 7.0 metres west of a point opposite the western kerb line of Elsworthy Rise	A
(iii)	from the eastern kerb line of Lower Merton Rise, eastwards for a distance of 18.72 metres	A
(iv)	between a point 5.5 metres east of the common boundary of St. John's Lodge and no. 157 King Henry's Road and a point 25 metres west of that point	A
(b)	main arm (from Gloucester Crescent to Harley Road); north side	
(i)	between the south-western kerb line of Regent's Park Road and a point 14.0 metres west of that kerb line	A
(ii)	between a point 7.0 metres east of a point opposite the eastern kerb line of Quickswood to a point 3.5 metres west of a point opposite the western kerb line of Quickswood	A
(iii)	between a point 51.5 metres east of a point opposite the eastern kerb line of Elsworthy Rise and a point 7.0 metres west of a point opposite the western kerb line of Elsworthy Rise	A

(iv)	from the eastern kerb line of Lower Merton Rise, eastwards for a distance of 16.87 metres	A
(v)	between a point 3.0 metres west of the western kerb line of the eastern access of Hawtrey Road and a point 3.5 metres east of the eastern kerb line of the eastern access to Hawtrey Road	A
(vi)	between the western kerb line of the western access to Hawtrey Road and a point 40.0 metres west of the party wall of nos. 155 and 157 King Henry's Road	A
(c)	the section which lies between King Henry's Road (main arm) and Ainger Road; south-east side; from a point 6.7 metres south-west of the party wall of nos. 11 and 13 King Henry's Road, south-westwards for a distance of 24.3 metres	A
(d)	the section which lies between King Henry's Road (main arm) and Ainger Road; north-west side; from a point opposite 2.7 metres west of the party wall of nos. 14 and 16 King Henry's Road, north-eastwards then south-eastwards for a distance of 20.9 metres	A
(e)	so much else of King Henry's Road that is public highway and which does not lie within those lengths specified above	2D

TABLE 2 - ITEMS INCLUDED IN SCHEDULE 2 TO THE PARENT ORDER

ITEM NUMBER	STREET – SIDE OF STREET – LENGTH OF HIGHWAY	RESTRICTED HOURS (See Schedule 3)
	FITZJOHN'S AVENUE	
(a)	west side: from the south-eastern kerb line of Perrin's Walk, south-eastwards for a distance of 19 metres	1
66	FERNCROFT AVENUE	

(a)	south-west side:	
(i)	from a point 10 metres north-west of the north-western kerb line of Kidderpore Gardens to a point 30 metres south-east of the south-eastern kerb line of Kidderpore Gardens	1
(ii)	from its junction with Platt's Lane to a point 10 metres south-east of the eastern kerb line of Platt's Lane	1
(b)	north-east side:	
(i)	from the south-eastern kerb line of Platt's Lane, south-eastwards for a distance of 16 metres	1
(ii)	from a point 10 metres north-west of the south-western kerb line of Hollycroft Avenue to a point 10 metres south-east of the south-eastern kerb line of Hollycroft Avenue	1
(c)	both sides: from its junction with Heath Drive to a point 10 metres north-west of the north-western kerb line of Heath Drive	1
124	KIDDERPORE GARDENS	
(a)	both sides:	
(i)	from its junction with Ferncroft Avenue to a point 10 metres south-west of the south-western kerb line of Ferncroft Avenue	1
(ii)	from its junction with Kidderpore Avenue to a point 10 metres north-east of the north-eastern kerb line of Kidderpore Avenue.	1

	KING HENRY'S ROAD	
(a)	the section which lies between King Henry's Road (main arm) and Ainger Road; south-east side; from a point 6.7 metres south-west of the party wall of nos. 11 and 13 King Henry's Road, south-westwards for a distance of 24.3 metres	1
(b)	the section which lies between King Henry's Road (main arm) and Ainger Road; north-west side; from a point opposite 2.7 metres west of the party wall of nos. 14 and 16 King Henry's Road, north-eastwards then south-eastwards for a distance of 20.9 metres	1

The Camden (Parking Places) (CA-J) (Amendment No. 9) Traffic Order 2018

2018 No. 73

KING HENRY'S ROAD

LONDON BOROUGH OF CAMDEN

TRAFFIC MANAGEMENT ORDER

2018 No. 73

The Camden (Parking Places) (CA-J) (Amendment No. 9) Traffic Order 2018

Made on

Coming into force on

The Council of the London Borough of Camden, after consulting the Commissioner of Police of the Metropolis, in exercise of the powers conferred by sections 45, 46, 49 and 124 of and part IV of schedule 9 to the Road Traffic Regulation Act 1984 [1984 c. 27], as amended by section 8 of and part I of schedule 5 to the Local Government Act 1985 [1985 c. 51], and of all other powers thereunto enabling, hereby make the following order:

1. Citation and commencement

- 1.1 This Order shall come into force on _____ and may be cited as The Camden (Parking Places) (CA-J) (Amendment No. 9) Traffic Order 2018

2. Interpretation

2.1 In this order:

2.1.1 the term "parent order" means the Camden (Parking Places) (CA-J) (Traffic Order 2012 [L.B.C 2012 No. 9];

2.1.2 any reference in this order to any other order or enactment shall be construed as a reference to that order or enactment as amended, applied, consolidated, re-enacted by or as having effect by virtue of any subsequent order or enactment;

2.1.3 unless the context otherwise requires, any expression used in this order which is also used in the parent order shall have the same meaning as in that order.

3. Revocation and designation of parking places

3.1 Without prejudice to the validity of anything done or to any liability incurred in respect of any act or omission before the coming into force of this order the parent order shall have effect as though:

3.1.1 there was omitted from schedule 1 to the parent order the items set out in table 1 of the schedule to this order;

3.1.2 there was included in schedule 1 to the parent order the items set out in table 2 of the schedule to this order;

Dated this

SCHEDULE

TABLE 1 - ITEMS OMITTED FROM SCHEDULE 1 TO THE PARENT ORDER

ITEM NUMBER	STREET	LENGTH OF HIGHWAY	CONTROLLED HOURS
11591	AINGER ROAD	north-west side, from a point 7.0 metres north-east of the boundary wall at r/o nos.29 and 31 King Henry's Road, north eastward for a distance of 35 metres.	MONDAY – FRIDAY 8.30AM –6PM
9346	KING HENRY'S ROAD	the south side, from the party wall of nos. 15 and 17 Regent's Park Road, south-westwards for a distance of 51 metres.	MONDAY – FRIDAY 8.30AM –6PM
11952	KING HENRY'S ROAD	the south side, from a point 6.5 metres west of the western kerb-line of Regent's Park Road, westward for a distance of 187.5 metres.	MONDAY – FRIDAY 8.30AM –6PM

TABLE 2 – ITEMS INCLUDED IN SCHEDULE 1 TO THE PARENT ORDER

ITEM NUMBER	STREET	LENGTH OF HIGHWAY	CONTROLLED HOURS
XXXX	KING HENRY'S ROAD	south side, from a point 6.5 metres west of the western kerb-line of Regent's Park Road, westward for a distance of 130.3 metres	MONDAY – FRIDAY 8.30AM –6PM
XXXX	KING HENRY'S ROAD	south-east side, from a point 4 metres north-east of the north-eastern kerb line of Erskine Road, north-eastward for a distance of 41 metres`	MONDAY – FRIDAY 8.30AM –6PM
XXXX	KING HENRY'S ROAD	north-west side, from a point 7.0 metres north-east of the boundary wall at rear of nos. 29 and 31 King Henry's Road, north-eastward for a distance of 35 metres.	MONDAY – FRIDAY 8.30AM –6PM

The Camden (Parking Places) (CA-P) (Amendment No. 19) Traffic Order 2018

2018 No. 74

MENELIK ROAD

LONDON BOROUGH OF CAMDEN

TRAFFIC MANAGEMENT ORDER

2018 No. 74

The Camden (Parking Places) (CA-P) (Amendment No. 19) Traffic Order 2018

Made on

Coming into force on

The Council of the London Borough of Camden, after consulting the Commissioner of Police of the Metropolis, in exercise of the powers conferred by sections 45, 46, 49 and 124 of and part IV of schedule 9 to the Road Traffic Regulation Act 1984 [1984 c. 27], as amended by section 8 of and part I of schedule 5 to the Local Government Act 1985 [1985 c. 51], and of all other powers thereunto enabling, hereby make the following order:

1. Citation and commencement

- 1.1 This Order shall come into force on _____ and may be cited as The Camden (Parking Places) (CA-P) (Amendment No. 19) Traffic Order 2018

2. Interpretation

2.1 In this order:

- 2.1.1 the term "parent order" means the Camden (Parking Places) (CA-P) (Traffic Order 2012 [L.B.C 2012 No. 14];
- 2.1.2 any reference in this order to any other order or enactment shall be construed as a reference to that order or enactment as amended, applied, consolidated, re-enacted by or as having effect by virtue of any subsequent order or enactment;
- 2.1.3 unless the context otherwise requires, any expression used in this order which is also used in the parent order shall have the same meaning as in that order.

3. Revocation and designation of parking places

- 3.1 Without prejudice to the validity of anything done or to any liability incurred in respect of any act or omission before the coming into force of this order the parent order shall have effect as though:
- 3.1.1 there was omitted from schedule 1 to the parent order the items set out in table 1 of the schedule to this order;
- 3.1.2 there was included in schedule 1 to the parent order the items set out in table 2 of the schedule to this order;

Dated this

SCHEDULE

TABLE 1 - ITEMS OMITTED FROM SCHEDULE 1 TO THE PARENT ORDER

ITEM NUMBER	STREET	LENGTH OF HIGHWAY	CONTROLLED HOURS
12641	MENELIK ROAD	(east to west arm), south side from a point 2.8 metres west of the party wall of nos.15 and 17 Somali Road, eastward for a distance of 14.5 metres	MONDAY - FRIDAY 10AM - NOON

TABLE 2 – ITEMS INCLUDED IN SCHEDULE 1 TO THE PARENT ORDER

ITEM NUMBER	STREET	LENGTH OF HIGHWAY	CONTROLLED HOURS
XXXX	MENELIK ROAD	(east to west arm), the south side, from a point 17 metres south-west of the south-western kerb line of Somali Road, south-westwards for a distance of 5 metres	MONDAY - FRIDAY 10AM - NOON

The Camden (Parking Places) (CA-R) (Amendment No. 17) Traffic Order 2018

2018 No. 75

GOLDHURST TERRACE

LONDON BOROUGH OF CAMDEN

TRAFFIC MANAGEMENT ORDER

2018 No. 75

The Camden (Parking Places) (CA-M) (Amendment No. 17) Traffic Order 2018

Made on

Coming into force on

The Council of the London Borough of Camden, after consulting the Commissioner of Police of the Metropolis, in exercise of the powers conferred by sections 45, 46, 49 and 124 of and part IV of schedule 9 to the Road Traffic Regulation Act 1984 [1984 c. 27], as amended by section 8 of and part I of schedule 5 to the Local Government Act 1985 [1985 c. 51], and of all other powers thereunto enabling, hereby make the following order:

1. Citation and commencement

- 1.1 This Order shall come into force on _____ and may be cited as The Camden (Parking Places) (CA-R) (Amendment No. 17) Traffic Order 2018

2. Interpretation

2.1 In this order:

- 2.1.1 the term "parent order" means the Camden (Parking Places) (CA-R) (Traffic Order 2012 [L.B.C 2012 No. 16];
- 2.1.2 any reference in this order to any other order or enactment shall be construed as a reference to that order or enactment as amended, applied, consolidated, re-enacted by or as having effect by virtue of any subsequent order or enactment;
- 2.1.3 unless the context otherwise requires, any expression used in this order which is also used in the parent order shall have the same meaning as in that order.

3. Revocation and designation of parking places

- 3.1 Without prejudice to the validity of anything done or to any liability incurred in respect of any act or omission before the coming into force of this order the parent order shall have effect as though:
- 3.1.1 there was omitted from schedule 2 to the parent order the items set out in table 1 of the schedule to this order;
- 3.1.2 there was included in schedule 2 to the parent order the items set out in table 2 of the schedule to this order;
- 3.1.3 there was omitted from schedule 3 to the parent order the items set out in table 3 of the schedule to this order;

3.1.4 there was included in schedule 3 to the parent order the items set out in table 4 of the schedule to this order.

Dated this

SCHEDULE

TABLE 1 - ITEMS OMITTED FROM SCHEDULE 2 TO THE PARENT ORDER

ITEM NUMBER	STREET	LENGTH OF HIGHWAY	CONTROLLED HOURS	TARIFF	MAXIMUM STAY
12612	GOLDHURST TERRACE	south-east side from the northern flank wall of no. 1 Goldhurst Terrace, south eastward for a distance of 35.0 metres	MONDAY – SATURDAY 8.30AM to 10PM	£2.55 per hour	30 minutes

TABLE 2 – ITEMS INCLUDED IN SCHEDULE 2 TO THE PARENT ORDER

ITEM NUMBER	STREET	LENGTH OF HIGHWAY	CONTROLLED HOURS	TARIFF	MAXIMUM STAY
XXXX	GOLDHURST TERRACE	south-east side from the northern flank wall of no. 1 Goldhurst Terrace, south eastward for a distance of 31.9 metres	MONDAY – SATURDAY 8.30AM to 10PM	£2.55 per hour	30 minutes

TABLE 3 – ITEMS OMITTED FROM SCHEDULE 3 TO THE PARENT ORDER

ITEM NUMBER	STREET	LENGTH OF HIGHWAY	CONTROLLED HOURS	TARIFF	MAXIMUM STAY
12613	GOLDHURST TERRACE	south-east side from a point 7.7 metres south-west of the northern flank wall of Rosslyn Mansions no. 21 Goldhurst Terrace, north eastward for a distance of 26.2 metres.	MONDAY – SATURDAY 8.30AM to 10PM	£2.55 per hour	30 minutes

TABLE 4 – ITEMS INCLUDED IN SCHEDULE 3 TO THE PARENT ORDER

ITEM NUMBER	STREET	LENGTH OF HIGHWAY	CONTROLLED HOURS	TARIFF	MAXIMUM STAY
XXXX	GOLDHURST TERRACE	south-east side from the party wall of nos. 17 and 19 Goldhurst Terrace, south-westwards for a distance of 17 metres	MONDAY – SATURDAY 8.30AM to 10PM	£2.55 per hour	30 minutes

**The Camden (Parking Places) (CA-S) (Amendment No. 6)
Traffic Order 2018**

2018 No. 25

FERNCROFT AVENUE

LONDON BOROUGH OF CAMDEN

TRAFFIC MANAGEMENT ORDER

2018 No. xx

The Camden (Parking Places) (CA-S) (Amendment No. 6) Traffic Order 2018

Made on

Coming into force on

The Council of the London Borough of Camden, after consulting the Commissioner of Police of the Metropolis, in exercise of the powers conferred by sections 45, 46, 49 and 124 of and part IV of schedule 9 to the Road Traffic Regulation Act 1984 [1984 c. 27], as amended by section 8 of and part I of schedule 5 to the Local Government Act 1985 [1985 c. 51], and of all other powers thereunto enabling, hereby make the following order:

1. Citation and commencement

- 1.1 This order shall come into force on and may be cited as the Camden (Parking Places) (CA-S) (Amendment No. 6) Traffic Order 2018.

2. Interpretation

- 2.1 In this order:

- 2.1.1 the term "parent order" means the Camden (Parking Places) (CA-S) Traffic Order 2012 [L.B.C 2012 No. 17];
- 2.1.2 any reference in this order to any other order or enactment shall be construed as a reference to that order or enactment as amended, applied, consolidated, re-enacted by or as having effect by virtue of any subsequent order or enactment;
- 2.1.3 unless the context otherwise requires, any expression used in this order which is also used in the parent order shall have the same meaning as in that order.

3. Revocation of parking place

- 3.1 Without prejudice to the validity of anything done or to any liability incurred in respect of any act or omission before the coming into force of this order the parent order shall have effect as though there was omitted from schedule 1 to the parent order the items set out in the table of the schedule to this order;

Dated this

SCHEDULE

ITEM OMITTED FROM SCHEDULE 1 TO THE PARENT ORDER

ITEM NUMBER	STREET	LENGTH OF HIGHWAY	CONTROLLED HOURS
BAY NOT IDENTIFIED	FERNCROFT AVENUE	Single parking bay opposite St. Margaret's School	

The Camden (Prohibition of Stopping Outside Schools) (Revocation No. 1) Traffic Order 2018

2018 No. 24

FERNCROFT AVENUE

LONDON BOROUGH OF CAMDEN

TRAFFIC MANAGEMENT ORDER

2018 No. 24

The Camden (Prohibition of Stopping Outside Schools) (Revocation No. 1)
Traffic Order 2018

Made on

Coming into force on

The Council of the London Borough of Camden, after consulting the Commissioner of Police of the Metropolis, in exercise of the powers conferred by sections 6 and 124 of and part IV of schedule 9 to the Road Traffic Regulation Act 1984 [1984 c. 27], as amended by section 8 of and part I of schedule 5 to the Local Government Act 1985 [1985 c. 51], and of all other powers thereunto enabling, hereby make the following order:

1. Citation and commencement

- 1.1 This order shall come into force on _____ and may be cited as the Camden (Prohibition of Stopping Outside Schools) (Revocation No. 1) Traffic Order 2018.

2. Interpretation

- 2.1 In this order, any reference to any other order or enactment shall be construed as a reference to that order or enactment as amended, applied, consolidated, re-enacted by or as having effect by virtue of any subsequent order or enactment.

3. Revocation of Prohibition of Stopping in Ferncroft Avenue

- 3.1 Without prejudice to the validity of anything done or to any liability incurred in respect of any act or omission before the coming into force of this order the Camden (Prohibition of Stopping Outside Schools) (No. 1) Traffic Order 1999 shall have effect as though there were omitted from Schedule 1 the reference to Ferncroft Avenue and the length of that street set out thereunder.

Dated this